

SOUTHWEST MINNESOTA STATE UNIVERSITY

Civic Engagement Survey 2013

Analysis of data collected July 1, 2012 through June 30, 2013



Table of Contents

Background	2
Section I: General Information	3
Section II: SMSU Experience	13
Section III: Civic Minded Graduate Scale	24
CMG Subscale Scores	55
Knowledge Subscale	56
Skills Subscale	58
Dispositions Subscale	60
Behavioral Intentions Subscale	62
Section IV: Responsibility and Commitment	64
Responsibility and Commitment Comments	67
General Comments	79
Further Statistical Analysis	83
Reliability	84
Subscale Correlations	84
Cross-tabulations and Chi Squares	85
One-way ANOVAs	90
Appendix	96

Background

Civic engagement is an integral part of the Southwest Minnesota State University (SMSU) mission statement and a priority area in university strategic planning. Student involvement in civic-related activities is promoted by the campus First Year Experience program, student clubs and organizations, academic departments and programs, and through a wide variety of course-related service-learning opportunities. Assessment of civic engagement on the SMSU campus is performed using the Civic Engagement Survey.

The Civic Engagement Survey was developed during the spring 2008 semester by SMSU faculty and staff and initially deployed as an online survey in April 2008. Graduating seniors are directed to complete this survey as part of their graduation requirements. Items on the survey measure students' demographics, their participation in volunteerism and other civic-oriented activities sponsored by SMSU, as well as their "civic-mindedness". Civic-mindedness is measured using the Civic Minded Graduate (CMG) Scale, adopted from the Center for Service and Learning at Indiana University – Purdue University at Indianapolis (IUPUI).

Data collected from spring 2008 and summer 2008 graduates (n=168) was reported in a poster presentation at the 2008 SMSU Undergraduate Research Conference and subsequently in a presentation at the 2009 SMSU Strategic Planning Day. Data collected between April 1, 2008 and June 30, 2009 (n=616) was reported in the Civic Engagement Survey 2009 document. Data collected between July 15, 2009 and June 30, 2010 (n=474) was reported in the Civic Engagement Survey 2010 document. Data collected between July 1, 2010 and June 30, 2011 (n=469) was reported in the Civic Engagement Survey 2011 document. Data collected between July 1, 2011 and June 30, 2012 (n=443) was reported in the Civic Engagement Survey 2012 document.

The present report summarizes data collected between July 1, 2012 and June 30, 2013. A total of 454 students completed the survey during this time period. In addition, this report includes trend analysis data for the last four academic years: 2009-2010, 2010-2011, 2011-2012, and 2012-2013. Data collected prior to the 2009-2010 academic year were not included in the trend analysis because they were obtained using a previous version of the Civic Engagement Survey, which utilized significantly different response categories for many of the items. A copy of the current Civic Engagement Survey instrument can be found in the Appendix.

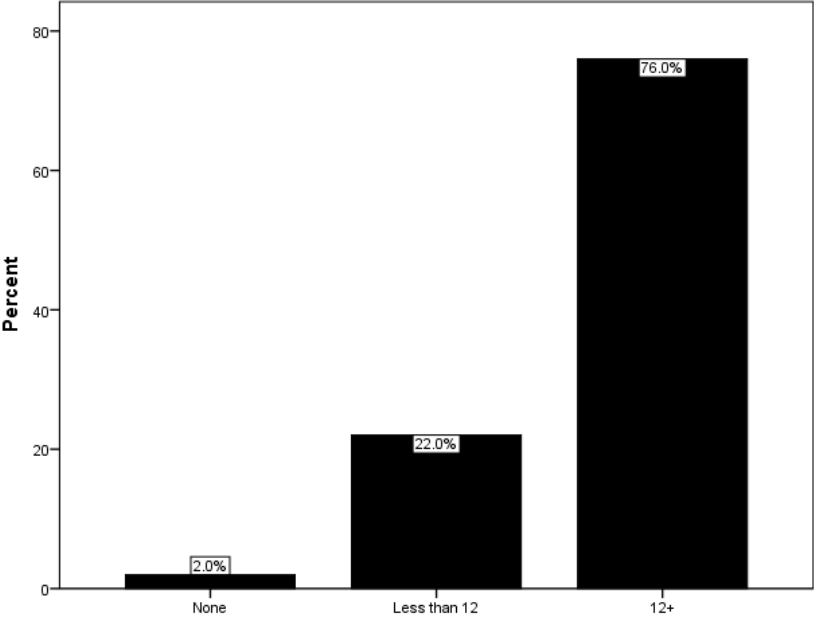
One significant change from the previous reports is how "Frequently" and "Infrequently" are defined in the trend reports. Previously, "Frequently" indicated occurrence of once or more per week. In this document, "Frequently" indicates the occurrence of once or more per semester.

Section I: General Information

Section I of the Civic Engagement Survey asks students to report various demographic characteristics. Data collected for each survey item are presented on a separate page in this section. A summary table is presented at the end of the section providing a review of the demographic characteristics for the past four academic years.

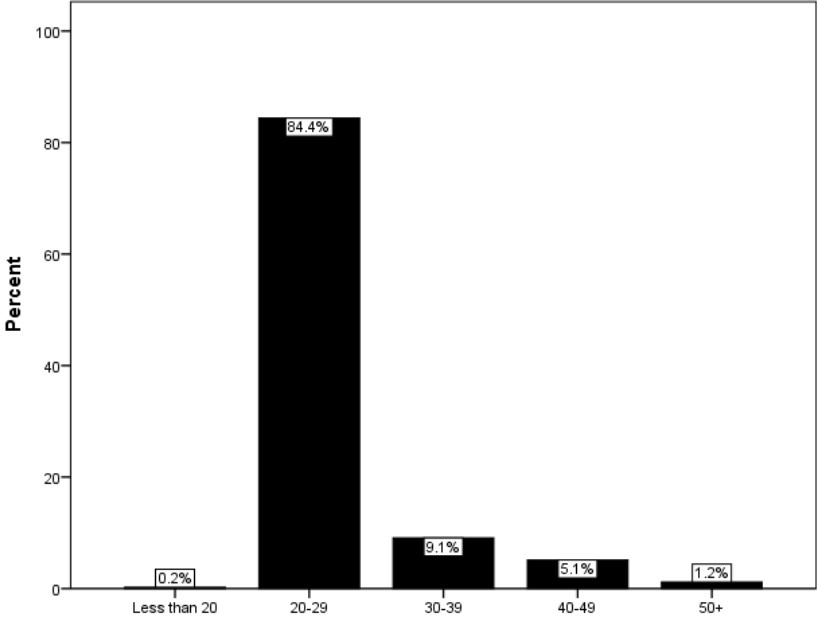
Current number of credit hours enrolled

	Frequency	Percent	Valid Percent
Valid None	9	2.0	2.0
Less than 12	100	22.0	22.0
12+	345	76.0	76.0
Total	454	100.0	100.0



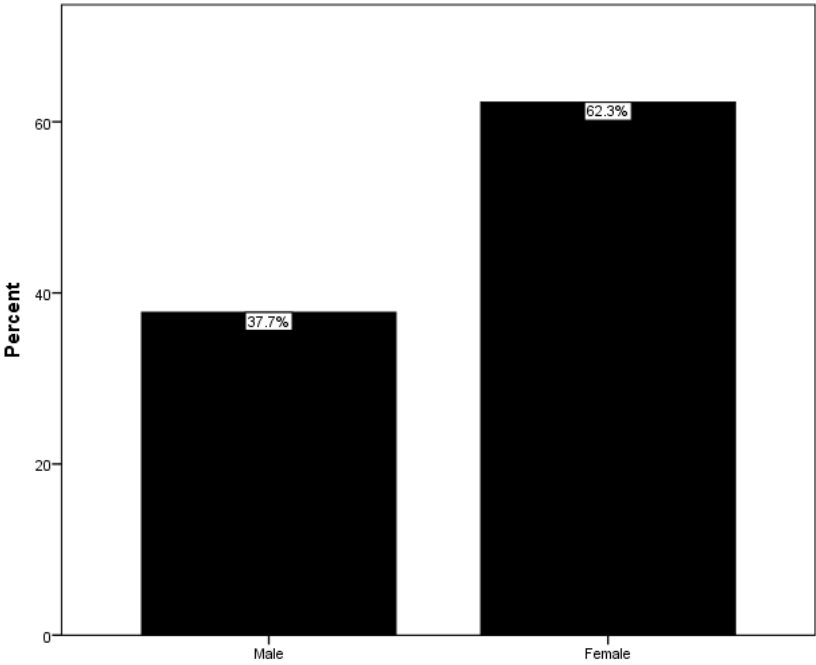
Age

		Frequency	Percent	Valid Percent
Valid	Less than 20	1	0.2	0.2
	20-29	362	79.7	84.4
	30-39	39	8.6	9.1
	40-49	22	4.8	5.1
	50+	5	1.1	1.2
	Total		429	94.5
Missing		25	5.5	
Total		454	100.0	



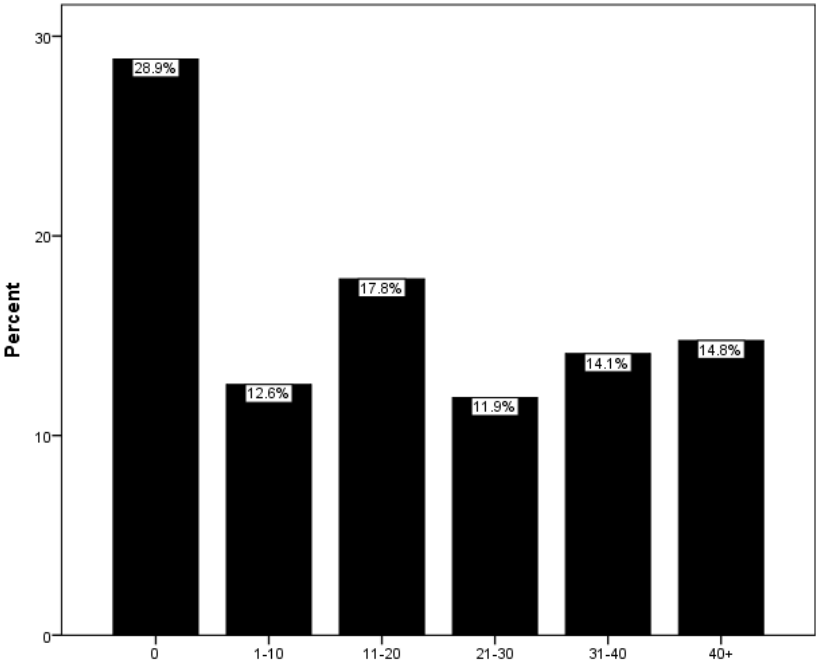
Gender

		Frequency	Percent	Valid Percent
Valid	Male	169	37.2	37.7
	Female	279	61.5	62.3
	Total	448	98.7	100.0
Missing		6	1.3	
Total		454	100.0	



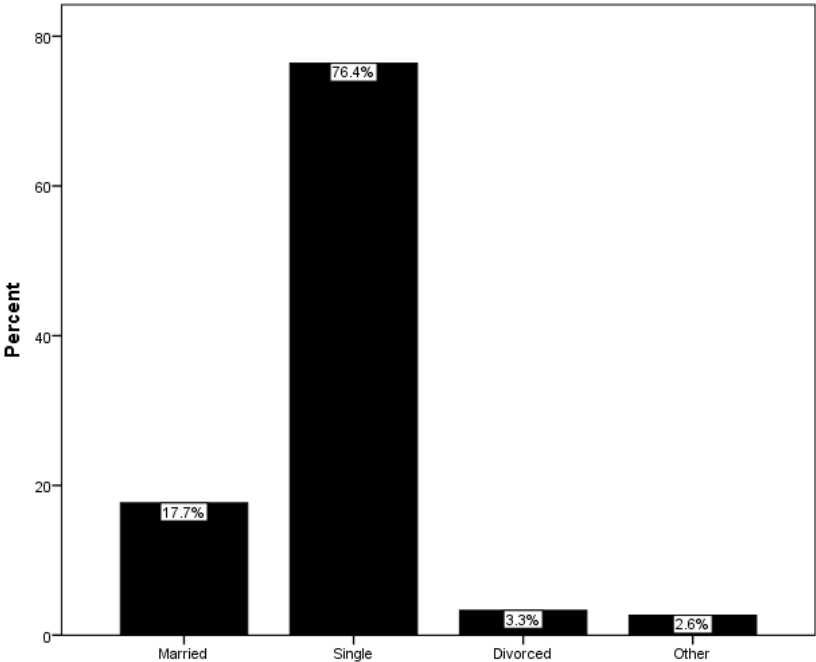
Number of Hours Currently Working in a Week

		Frequency	Percent	Valid Percent
Valid	0	131	28.9	28.9
	1-10	57	12.6	12.6
	11-20	81	17.8	17.8
	21-30	54	11.9	11.9
	31-40	64	14.1	14.1
	40+	67	14.8	14.8
	Total	454	100.0	100.0



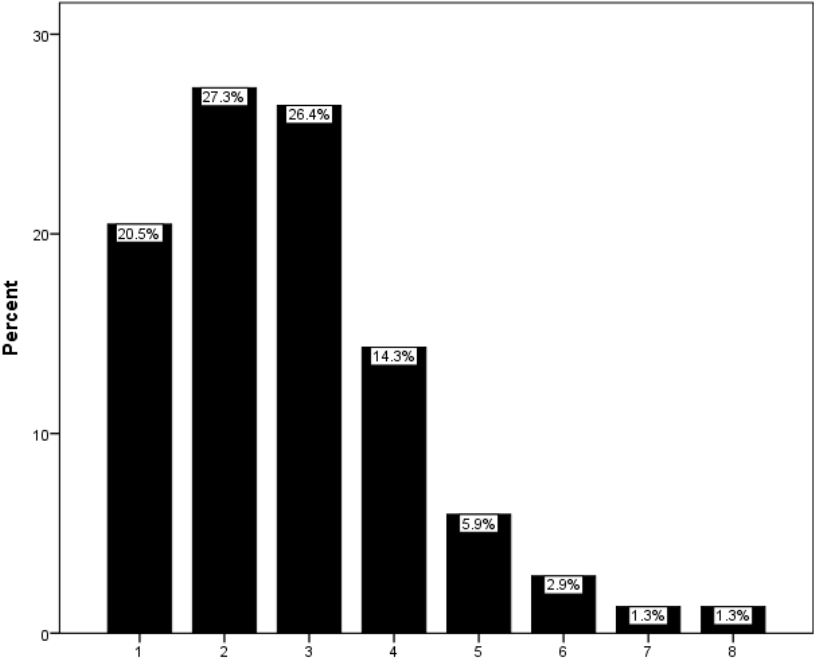
Marital Status

		Frequency	Percent	Valid Percent
Valid	Married	80	17.6	17.7
	Single	346	76.2	76.4
	Divorced	15	3.3	3.3
	Other	12	2.6	2.6
	Total	453	99.8	100.0
Missing		1	0.2	
Total		454	100.0	



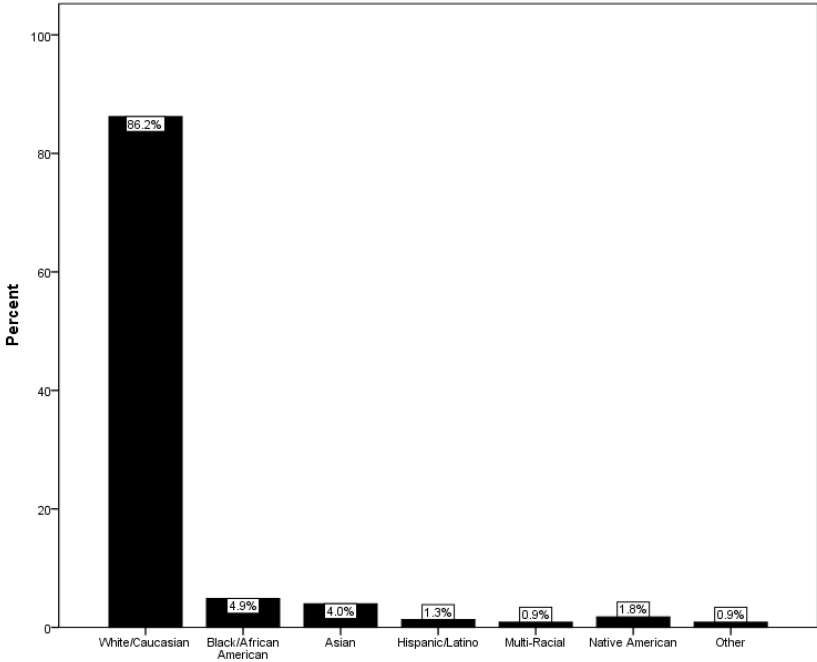
Number of children in your family

		Frequency	Percent	Valid Percent
Valid	1	93	20.5	20.5
	2	124	27.3	27.3
	3	120	26.4	26.4
	4	65	14.3	14.3
	5	27	5.9	5.9
	6	13	2.9	2.9
	7	6	1.3	1.3
	8	6	1.3	1.3
	Total	454	100.0	100.0



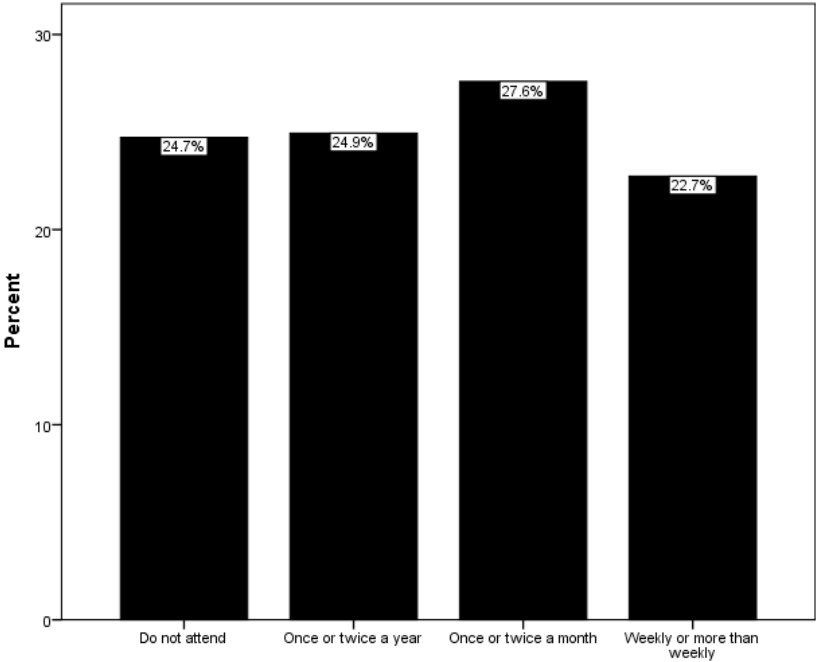
Race

		Frequency	Percent	Valid Percent
Valid	White/Caucasian	194	42.7	86.2
	Black/African American	11	2.4	4.9
	Asian	9	2.0	4.0
	Hispanic/Latino	3	0.7	1.3
	Multi-Racial	2	0.4	0.9
	Native American	4	0.9	1.8
	Other	2	0.4	0.9
	Total		225	49.3
Missing		229	50.4	
Total		454	100.0	



How often do you attend religious activities?

		Frequency	Percent	Valid Percent
Valid	Do not attend	112	24.7	24.7
	Once or twice a year	113	24.9	24.9
	Once or twice a month	125	27.5	27.6
	Weekly or more than weekly	103	22.7	22.7
	Total	453	99.8	100.0
Missing		1	0.2	
Total		454	100.0	



Demographic Trend Analysis

Demographic	Response	2010	2011	2012	2013
Number		474	469	443	454
Mean Age		24.8	25.1	24.8	25.3
Mean Number of Children in Your Family		2.9	2.7	2.9	2.8
Current Number of Hours Enrolled	None	4.6%	3.4%	2.5%	2.0%
	<12	24.7%	26.4%	24.5%	22.0%
	12+	70.7%	70.1%	72.9%	76.0%
Gender	Male	39.3%	42.9%	39.7%	37.7%
	Female	60.7%	57.1%	60.3%	62.3%
Number of Hours Currently Working in a Week	0	30.6%	31.8%	26.6%	28.9%
	1-10	12.7%	8.7%	10.8%	12.6%
	11-20	19.0%	16.6%	18.1%	17.8%
	21-30	14.3%	15.1%	15.8%	11.9%
	31-40	12.0%	14.1%	14.2%	14.1%
	40+	11.4%	13.6%	14.4%	14.8%
Marital Status	Married	19.1%	22.3%	17.7%	17.7%
	Single	75.5%	74.2%	78.0%	76.4%
	Divorced	2.1%	1.7%	1.8%	3.3%
	Other	3.2%	1.7%	2.5%	2.6%
Race	White/Caucasian	36.9%	37.7%	42.0%	42.7%
	Black/African American	2.1%	1.9%	1.4%	2.4%
	Asian	4.4%	2.8%	3.4%	2.0%
	Hispanic/Latino	0.8%	0.4%	0.2%	0.7%
	Multi-racial	0.4%	0.0%	0.9%	0.4%
	Native American	0.2%	0.2%	0.0%	0.9%
	Other	0.0%	0.0%	0.5%	0.4%
	Unspecified	55.1%	56.9%	51.7%	50.4%
How Often Do You Attend Religious Activities?	Do not attend	21.7%	21.6%	24.0%	24.7%
	Once or twice a year	21.7%	23.9%	26.1%	24.9%
	Once or twice a month	29.8%	30.3%	26.8%	27.6%
	Weekly or more than weekly	26.8%	24.1%	23.1%	22.7%

Percents do not include missing values, with the exception of "Race" where missing values are categorized as "Unspecified".

Section II: SMSU Experience

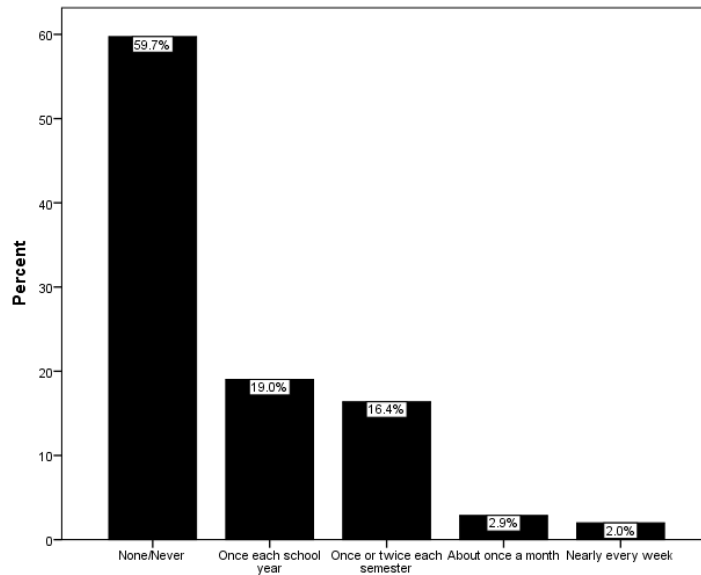
Section II of the Civic Engagement Survey asks students to report on the volunteering and community service experiences they have had while a student at SMSU. Data collected for each survey item are presented on a separate page in this section. For each item, current year data are reported followed immediately by the corresponding trend analysis data covering the past four academic years.

All survey items in this section of the survey were preceded by the following prompt:

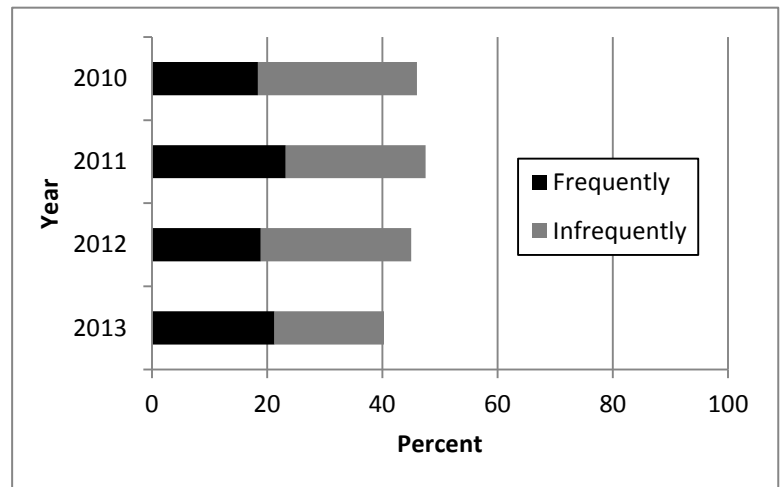
Please indicate how often you have participated in the following as part of your student experiences at SMSU: 1= None/Never 2= Once each school year 3= Once or twice each semester 4= About once a month 5= Nearly every week

Volunteering with others from SMSU for one-time service activities such as: helping out with a Habitat for Humanity project, being part of a food drive, or contributing to the Coats for Kids event

2013 Data		Frequency	Percent	Valid Percent
Valid	None/Never	270	59.5	59.7
	Once each school year	86	18.9	19.0
	Once or twice each semester	74	16.3	16.4
	About once a month	13	2.9	2.9
	Nearly every week	9	2.0	2.0
	Total	452	99.6	100.0
Missing		2	0.4	
Total		454	100.0	



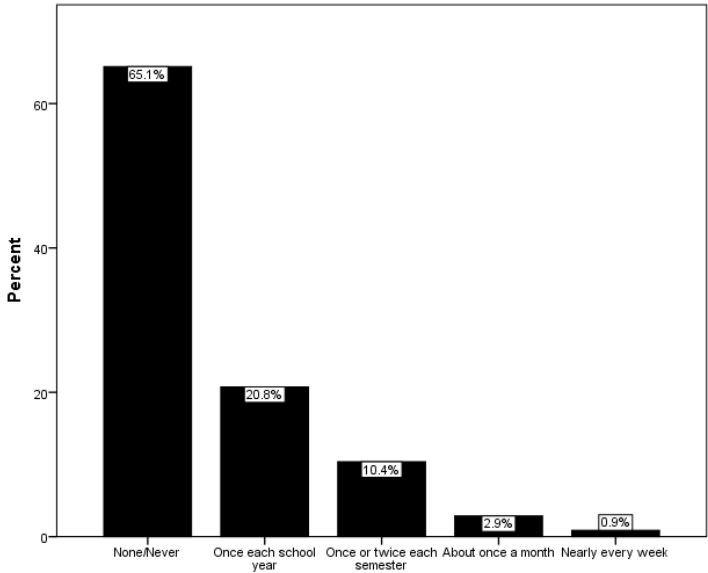
Year	Frequently	Infrequently	None/Never
2010	18.4%	27.6%	54.0%
2011	23.2%	24.3%	52.5%
2012	18.9%	26.1%	55.0%
2013	21.3%	19.0%	59.7%



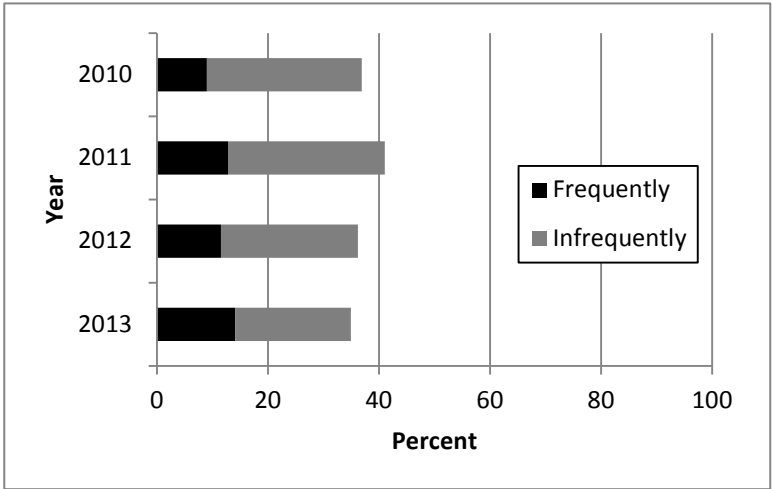
Frequently = Once or more per semester; Infrequently = Less than once per semester

Volunteering for campus events such as Relay for Life or the annual Chili Feed Cook-off (to support the local food shelf)

2013 Data		Frequency	Percent	Valid Percent
Valid	None/Never	295	65.0	65.1
	Once each school year	94	20.7	20.8
	Once or twice each semester	47	10.4	10.4
	About once a month	13	2.9	2.9
	Nearly every week	4	0.9	0.9
	Total	453	99.8	100.0
Missing		1	.2	
Total		454	100.0	



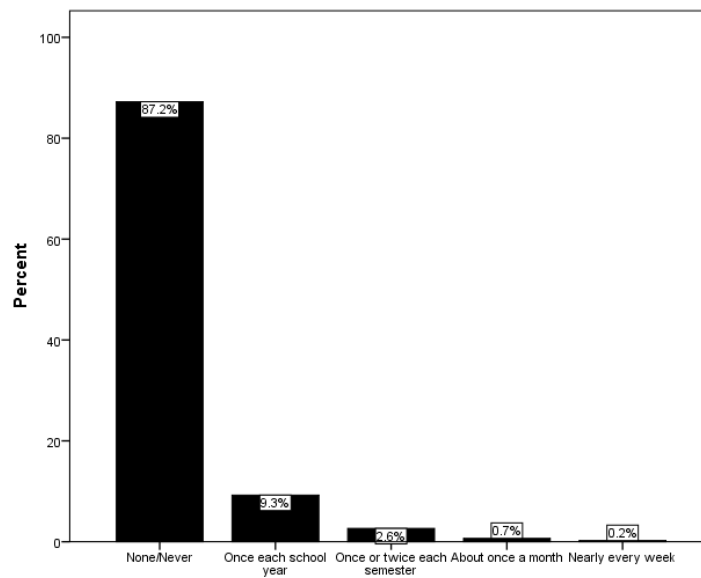
Year	Frequently	Infrequently	None/Never
2010	9.0%	27.9%	63.1%
2011	12.8%	28.2%	59.0%
2012	11.5%	24.7%	63.8%
2013	14.1%	20.8%	65.1%



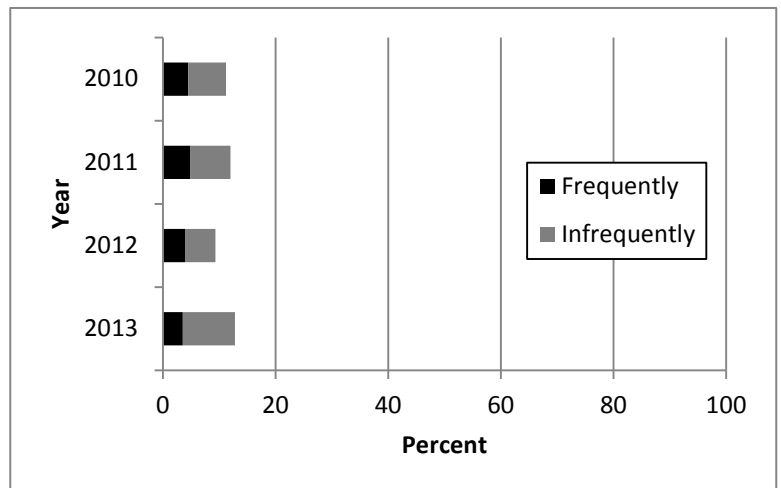
Frequently = Once or more per semester; Infrequently = Less than once per semester

Participation in a public debate, working on a political campaign, or assisting with voter registration

2013 Data		Frequency	Percent	Valid Percent
Valid	None/Never	396	87.2	87.2
	Once each school year	42	9.3	9.3
	Once or twice each semester	12	2.6	2.6
	About once a month	3	0.7	0.7
	Nearly every week	1	0.2	0.2
	Total	454	100.0	100.0



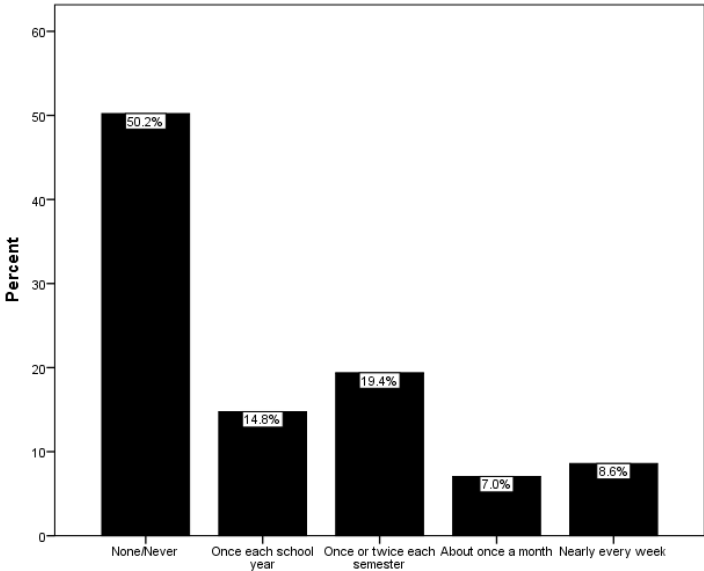
Year	Frequently	Infrequently	None/Never
2010	4.5%	6.7%	88.8%
2011	4.9%	7.1%	88.0%
2012	3.9%	5.4%	90.7%
2013	3.5%	9.3%	87.2%



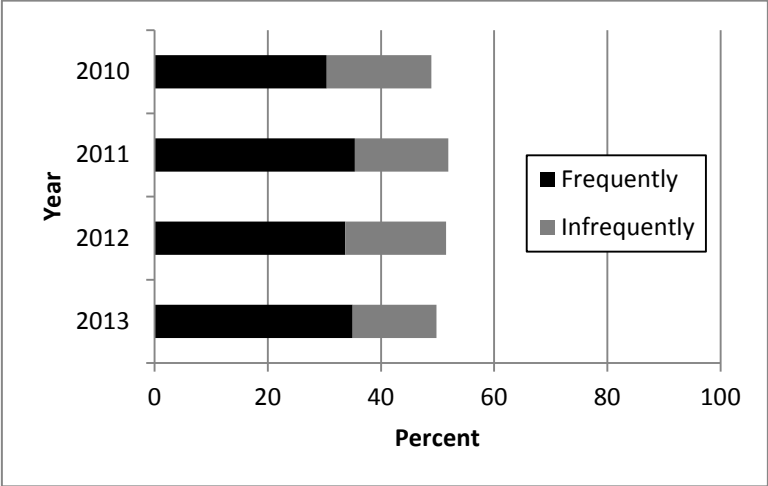
Frequently = Once or more per semester; Infrequently = Less than once per semester

Community involvement through a campus organization or club

2013 Data		Frequency	Percent	Valid Percent
Valid	None/Never	228	50.2	50.2
	Once each school year	67	14.8	14.8
	Once or twice each semester	88	19.4	19.4
	About once a month	32	7.0	7.0
	Nearly every week	39	8.6	8.6
	Total	454	100.0	100.0



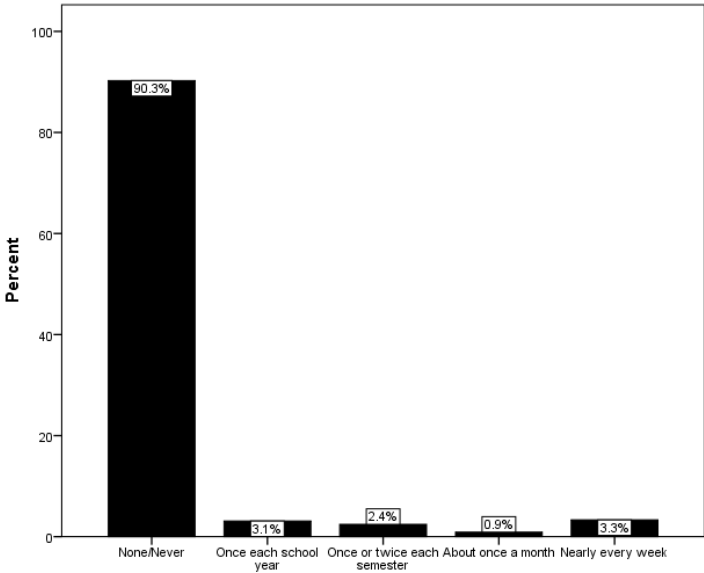
Year	Frequently	Infrequently	None/Never
2010	30.4%	18.5%	51.1%
2011	35.4%	16.5%	48.1%
2012	33.7%	17.8%	48.5%
2013	35.0%	14.8%	50.2%



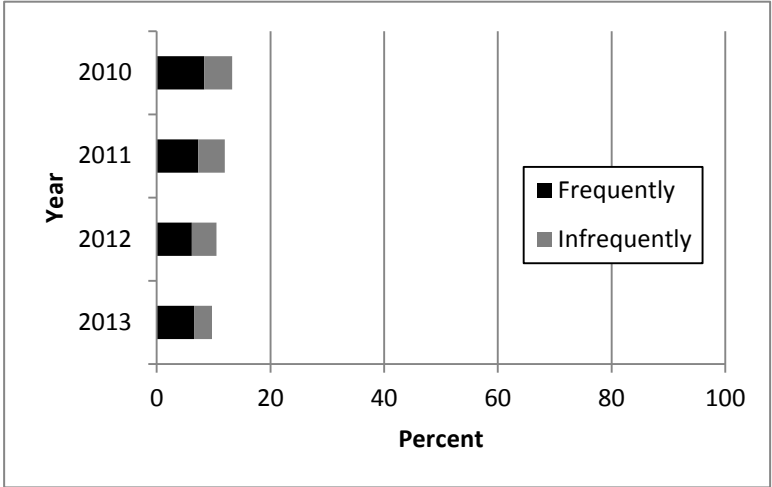
Frequently = Once or more per semester; Infrequently = Less than once per semester

Have you participated in community service through Federal Work Study?

2013 Data		Frequency	Percent	Valid Percent
Valid	None/Never	408	89.9	90.3
	Once each school year	14	3.1	3.1
	Once or twice each semester	11	2.4	2.4
	About once a month	4	0.9	0.9
	Nearly every week	15	3.3	3.3
	Total	452	99.6	100.0
Missing		2	0.4	
Total		454	100.0	



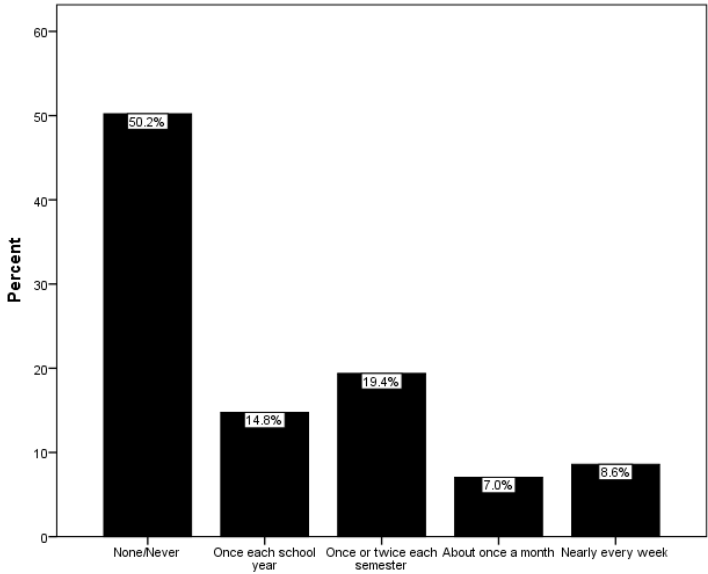
Year	Frequently	Infrequently	None/Never
2010	8.4%	4.9%	86.7%
2011	7.3%	4.7%	88.0%
2012	6.2%	4.3%	89.5%
2013	6.6%	3.1%	90.3%



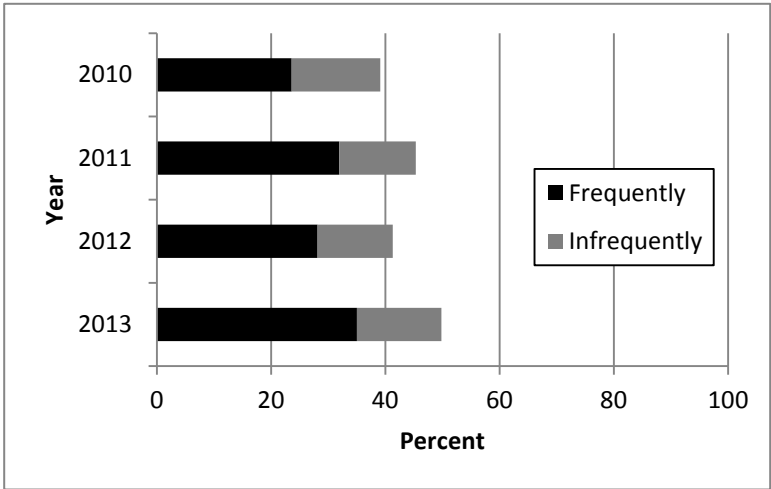
Frequently = Once or more per semester; Infrequently = Less than once per semester

Have you participated in community service through an organization that was not connected to SMSU?

2013 Data		Frequency	Percent	Valid Percent
Valid	None/Never	228	50.2	50.2
	Once each school year	67	14.8	14.8
	Once or twice each semester	88	19.4	19.4
	About once a month	32	7.0	7.0
	Nearly every week	39	8.6	8.6
	Total	454	100.0	100.0



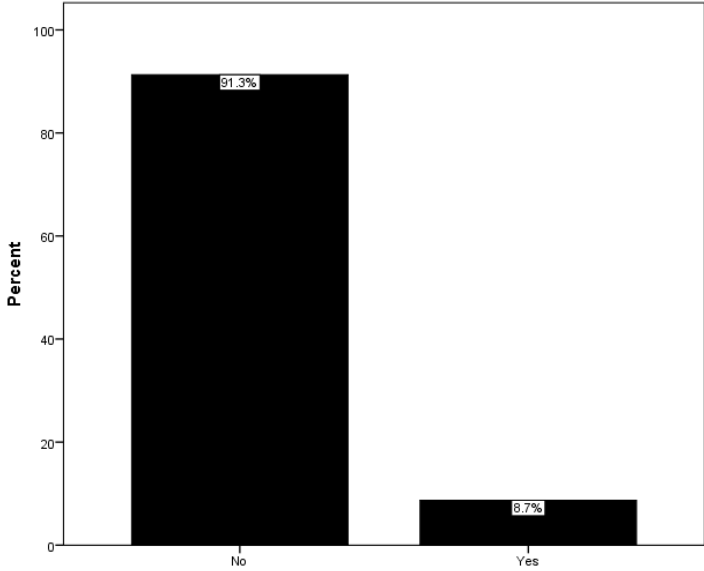
Year	Frequently	Infrequently	None/Never
2010	23.6%	15.5%	60.9%
2011	31.9%	13.4%	54.7%
2012	28.1%	13.2%	58.7%
2013	35.0%	14.8%	50.2%



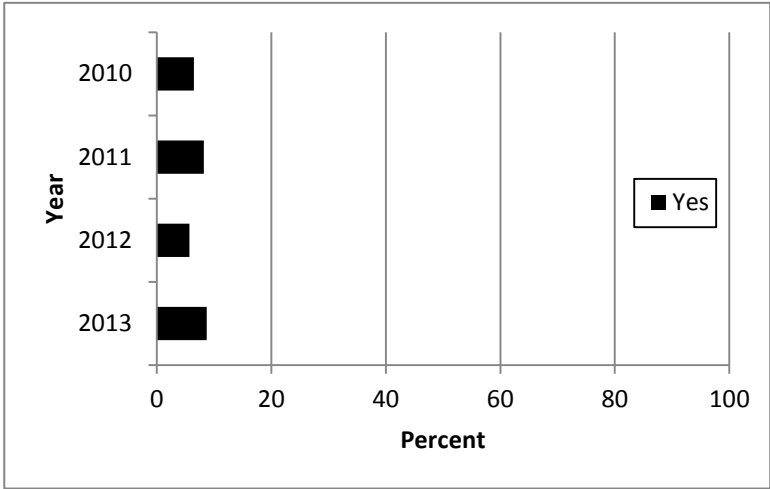
Frequently = Once or more per semester; Infrequently = Less than once per semester

Have you ever participated in community service as part of a scholarship?

2013 Data		Frequency	Percent	Valid Percent
Valid	No	409	90.1	91.3
	Yes	39	8.6	8.7
	Total	448	98.7	100.0
Missing		6	1.3	
Total		454	100.0	

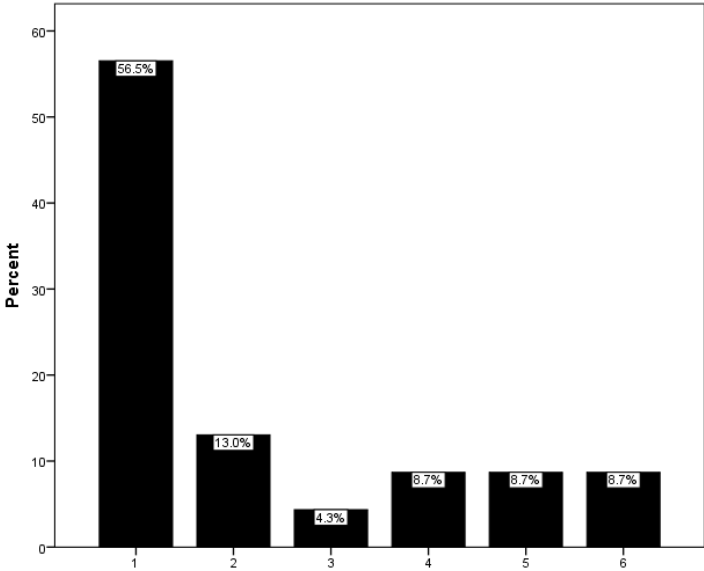


Year	Yes	No
2010	6.5%	93.5%
2011	8.2%	91.8%
2012	5.7%	94.3%
2013	8.7%	91.3%



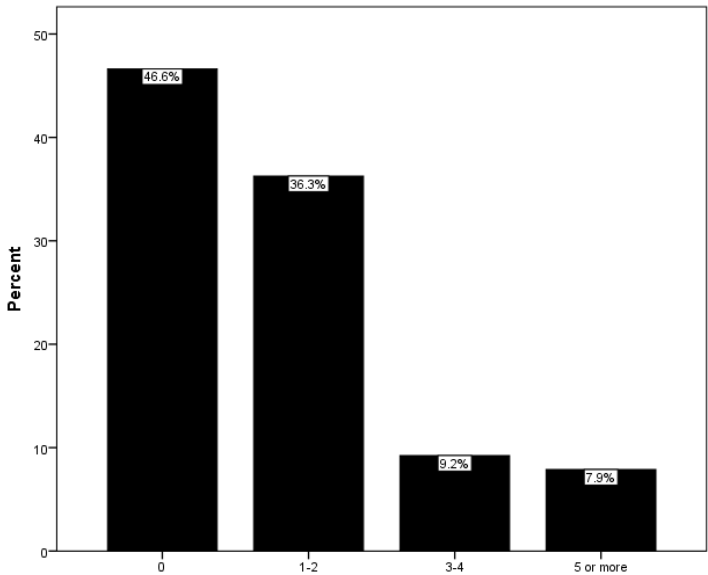
If involved in community service as part of a scholarship, for how many years?

2013 Data		Frequency	Percent	Valid Percent
Valid	1	13	2.9	56.5
	2	3	0.7	13.0
	3	1	0.2	4.3
	4	2	0.4	8.7
	5	2	0.4	8.7
	6	2	0.4	8.7
	Total	23	5.1	100.0
Missing		431	94.9	
Total		454	100.0	

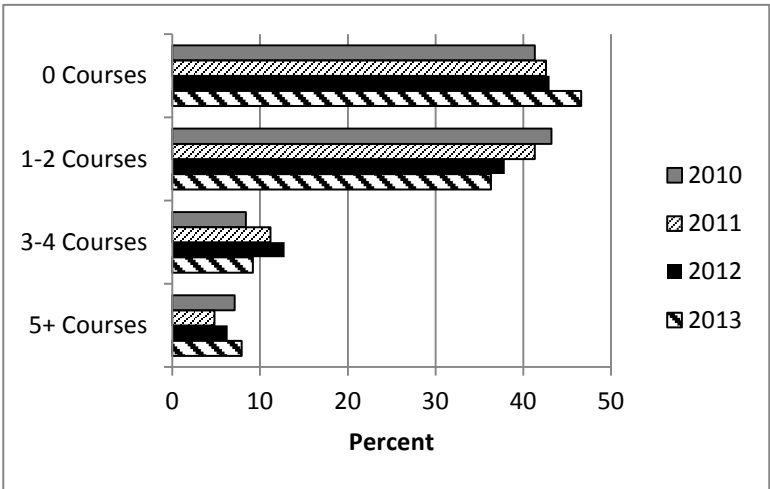


Please estimate the number of courses that you have taken at SMSU that have included community involvement such as volunteer service, community-based learning experiences, one-time service projects, or other service activities.

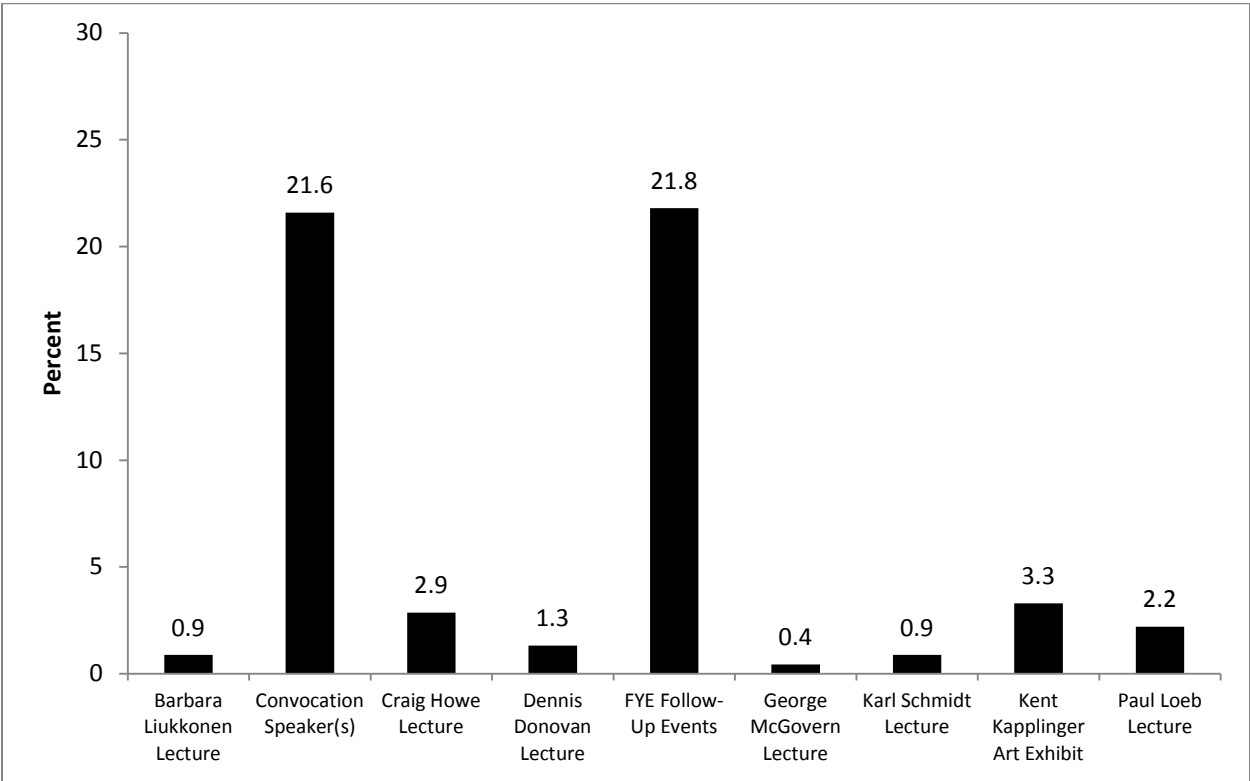
2013 Data		Frequency	Percent	Valid Percent
Valid	0	207	45.6	46.6
	1-2	161	35.5	36.3
	3-4	41	9.0	9.2
	5 or more	35	7.7	7.9
	Total	444	97.8	100.0
Missing		10	2.2	
Total		454	100.0	



Year	Number of Courses			
	0	1-2	3-4	5+
2010	41.3%	43.2%	8.4%	7.1%
2011	42.6%	41.3%	11.2%	4.8%
2012	43.0%	37.9%	12.8%	6.3%
2013	46.6%	36.3%	9.2%	7.9%



Which of the following First Year Experience events have you attended at SMSU?
(Check all that apply.)



Section III: Civic Minded Graduate Scale

Section III of the Civic Engagement Survey consisted of the 30-item Civic Minded Graduate [CMG] scale. This scale is used to measure students' knowledge, skills, attitudes, and behavioral intentions toward civic engagement. Data collected for each survey item are presented on a separate page in this section. At the end of the section, data for each of the subscales are compiled and are immediately followed by a trend analysis covering the past four academic years.

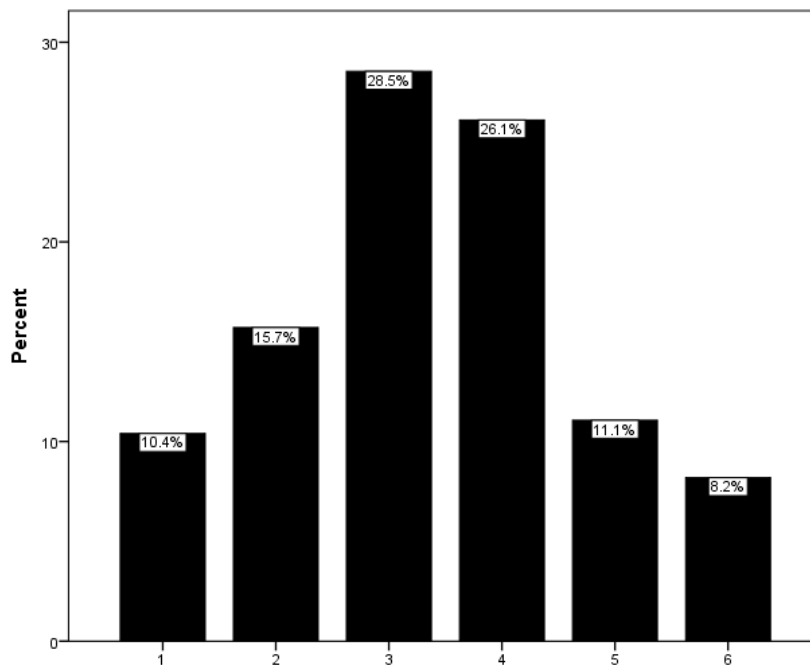
All survey items in this section of the survey were preceded by the following prompt:

Please indicate whether you agree or disagree with the following. 1= Strongly Disagree 6= Strongly Agree

[CMG1] My experiences at SMSU have helped me know a lot about opportunities to become involved in the community. (1=Strongly Disagree; 6=Strongly Agree)

N	Valid	452
	Missing	2
Mean		3.36
Std. Deviation		1.373

		Frequency	Percent	Valid Percent
Valid	1	47	10.4	10.4
	2	71	15.6	15.7
	3	129	28.4	28.5
	4	118	26.0	26.1
	5	50	11.0	11.1
	6	37	8.1	8.2
	Total	452	99.6	100.0
Missing		2	0.4	
Total		454	100.0	

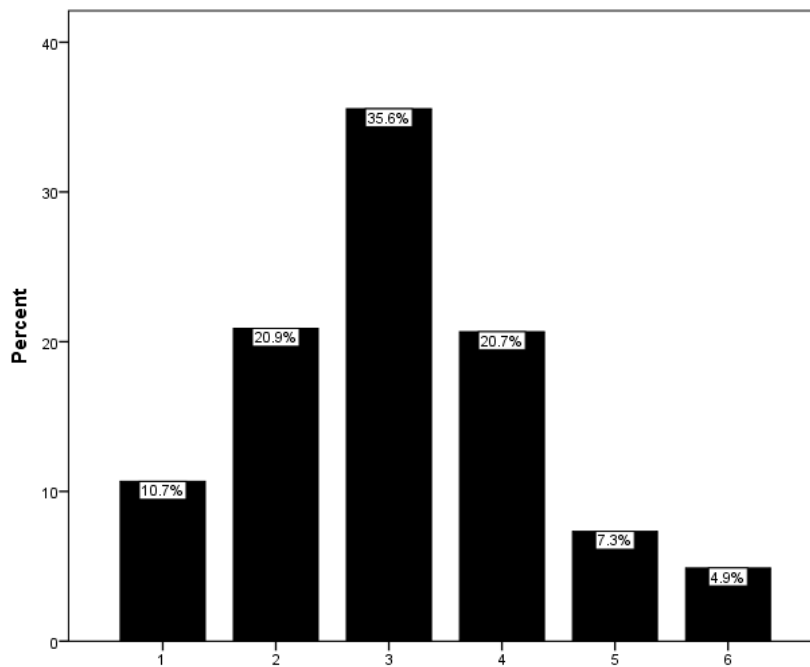


[CMG2] As a result of my experiences at SMSU, other students who know me well would describe me as a person who can discuss controversial social issues with civility and respect.

(1=Strongly Disagree; 6=Strongly Agree)

N	Valid	450
	Missing	4
Mean		3.08
Std. Deviation		1.254

		Frequency	Percent	Valid Percent
Valid	1	48	10.6	10.7
	2	94	20.7	20.9
	3	160	35.2	35.6
	4	93	20.5	20.7
	5	33	7.3	7.3
	6	22	4.8	4.9
	Total	450	99.1	100.0
Missing		4	0.9	
Total		454	100.0	

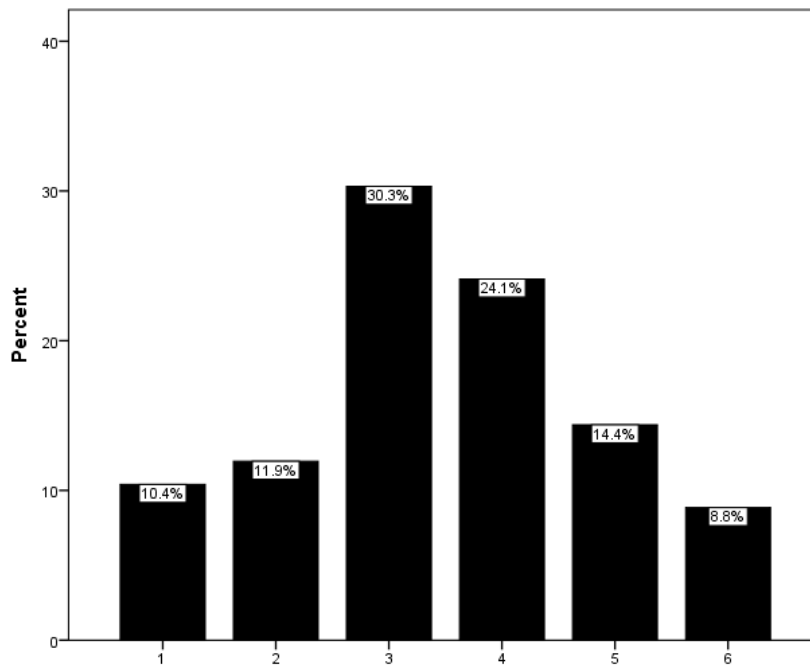


[CMG3] My experiences at SMSU have prepared me to write a letter to the newspaper or community leaders about a community issue.

(1=Strongly Disagree; 6=Strongly Agree)

N	Valid	452
	Missing	2
Mean		3.47
Std. Deviation		1.391

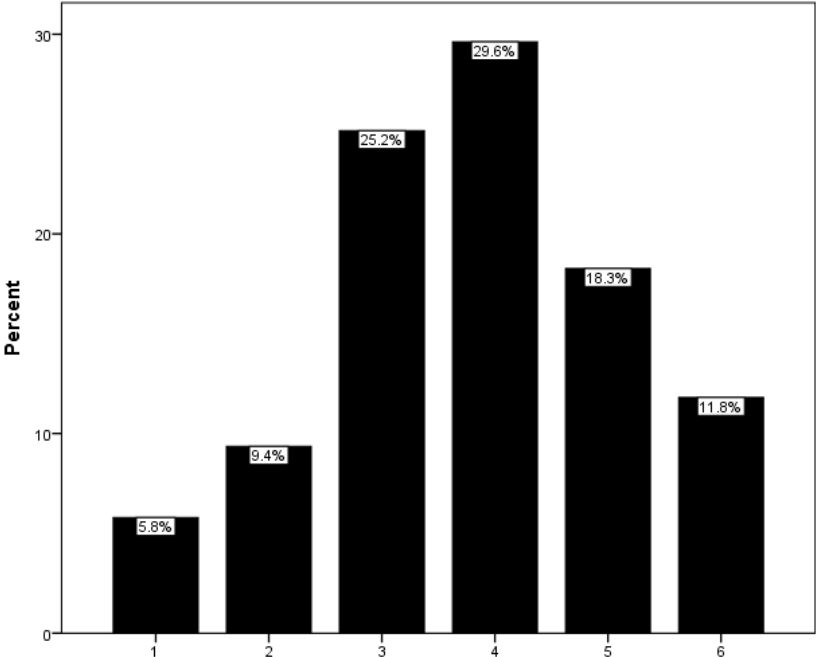
		Frequency	Percent	Valid Percent
Valid	1	47	10.4	10.4
	2	54	11.9	11.9
	3	137	30.2	30.3
	4	109	24.0	24.1
	5	65	14.3	14.4
	6	40	8.8	8.8
	Total	452	99.6	100.0
Missing		2	0.4	
Total		454	100.0	



[CMG4] My SMSU education has given me the professional knowledge and skills that I need to help address community issues.
 (1=Strongly Disagree; 6=Strongly Agree)

N	Valid	449
	Missing	5
Mean		3.81
Std. Deviation		1.330

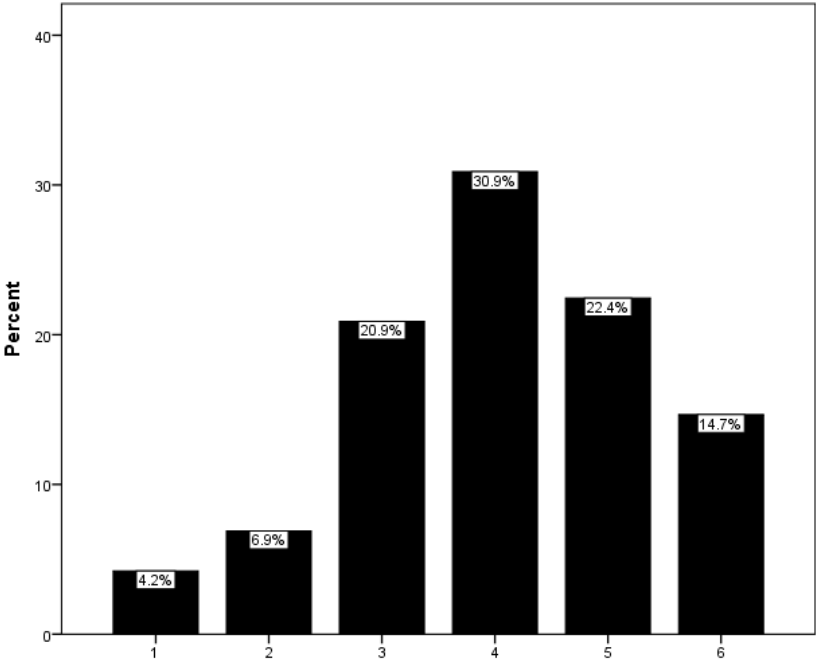
		Frequency	Percent	Valid Percent
Valid	1	26	5.7	5.8
	2	42	9.3	9.4
	3	113	24.9	25.2
	4	133	29.3	29.6
	5	82	18.1	18.3
	6	53	11.7	11.8
	Total	449	98.9	100.0
Missing		5	1.1	
Total		454	100.0	



[CMG5] My experiences at SMSU have helped make me a good listener, even when peoples' opinions are different from mine.
 (1=Strongly Disagree; 6=Strongly Agree)

N	Valid	450
	Missing	4
Mean		4.04
Std. Deviation		1.295

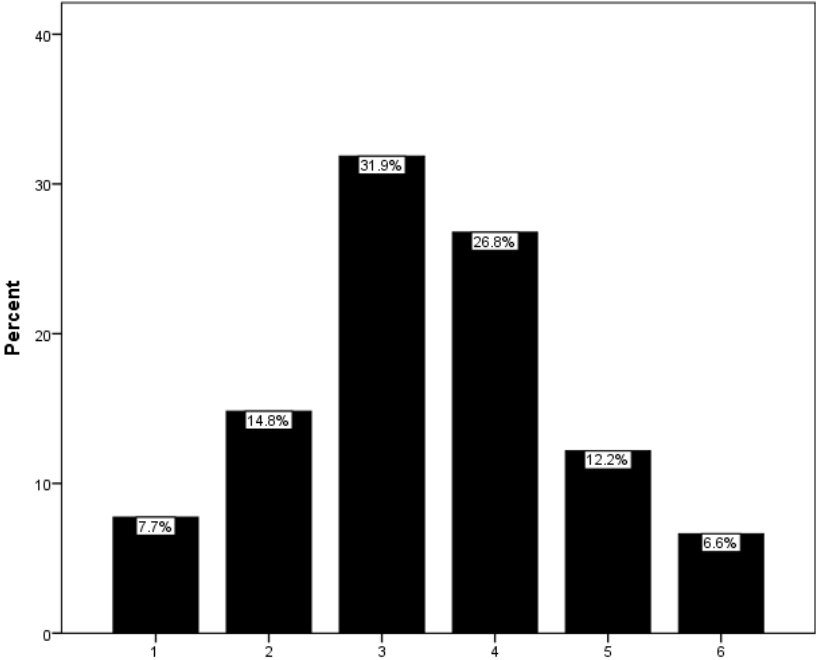
		Frequency	Percent	Valid Percent
Valid	1	19	4.2	4.2
	2	31	6.8	6.9
	3	94	20.7	20.9
	4	139	30.6	30.9
	5	101	22.2	22.4
	6	66	14.5	14.7
	Total	450	99.1	100.0
Missing		4	0.9	
Total		454	100.0	



[CMG6] Based on my experiences at SMSU, I would say that most other students know less about community organizations and volunteer opportunities than I do.
 (1=Strongly Disagree; 6=Strongly Agree)

N	Valid	452
	Missing	2
Mean		3.41
Std. Deviation		1.284

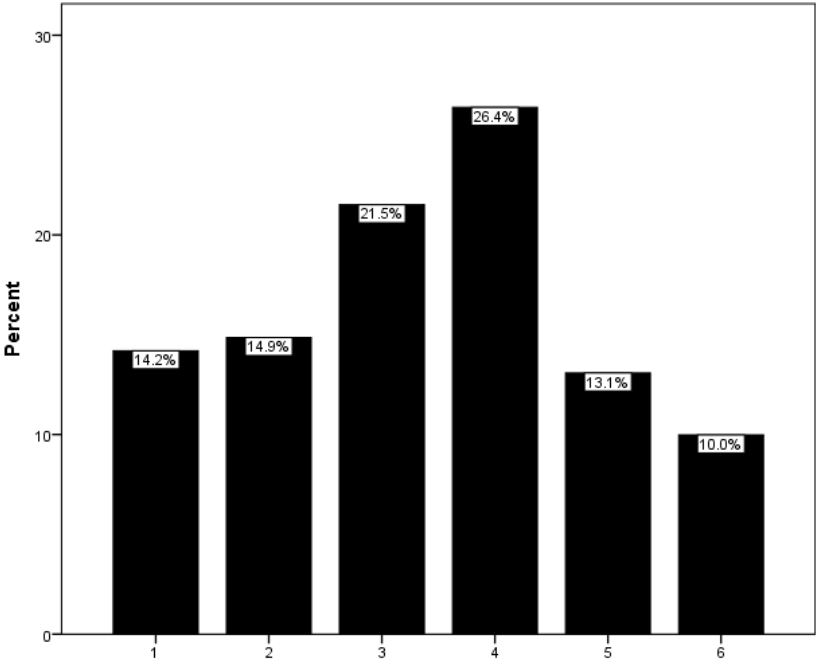
		Frequency	Percent	Valid Percent
Valid	1	35	7.7	7.7
	2	67	14.8	14.8
	3	144	31.7	31.9
	4	121	26.7	26.8
	5	55	12.1	12.2
	6	30	6.6	6.6
Total		452	99.6	100.0
Missing		2	0.4	
Total		454	100.0	



[CMG7] My experiences at SMSU have helped me realize that it is important for me to vote and be politically involved.
 (1=Strongly Disagree; 6=Strongly Agree)

N	Valid	451
	Missing	3
Mean		3.39
Std. Deviation		1.501

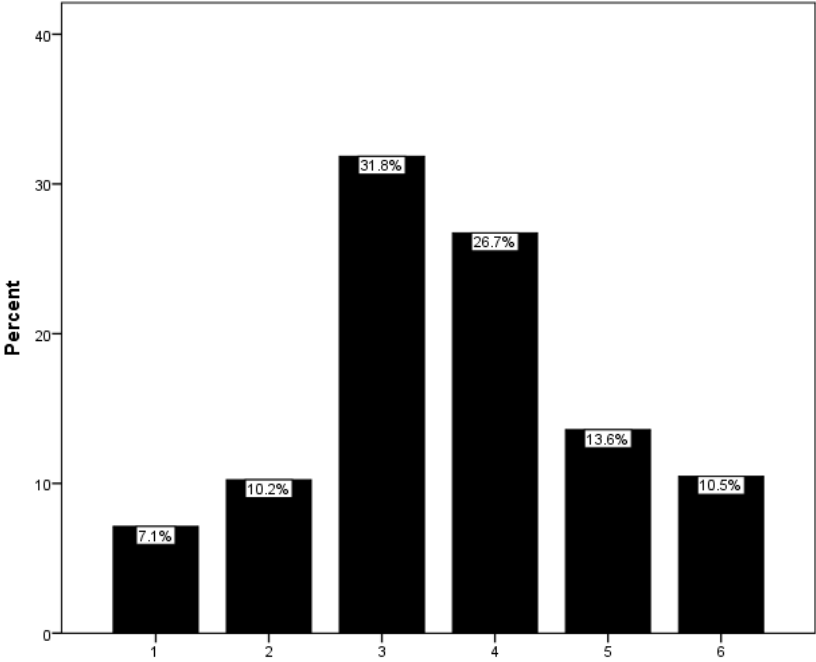
		Frequency	Percent	Valid Percent
Valid	1	64	14.1	14.2
	2	67	14.8	14.9
	3	97	21.4	21.5
	4	119	26.2	26.4
	5	59	13.0	13.1
	6	45	9.9	10.0
	Total	451	99.3	100.0
Missing		3	0.7	
Total		454	100.0	



[CMG8] My education at SMSU has increased my confidence that I can contribute to improving life in my community.
 (1=Strongly Disagree; 6=Strongly Agree)

N	Valid	449
	Missing	5
Mean		3.61
Std. Deviation		1.332

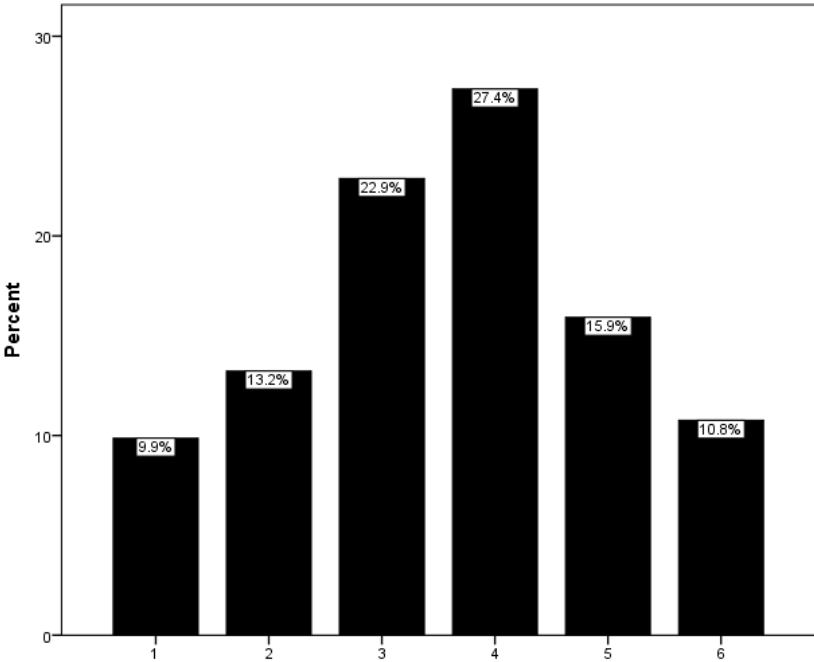
		Frequency	Percent	Valid Percent
Valid	1	32	7.0	7.1
	2	46	10.1	10.2
	3	143	31.5	31.8
	4	120	26.4	26.7
	5	61	13.4	13.6
	6	47	10.4	10.5
	Total	449	98.9	100.0
Missing		5	1.1	
Total		454	100.0	



[CMG9] Because of my SMSU education, I believe that my community is enriched by having some cultural or ethnic diversity.
 (1=Strongly Disagree; 6=Strongly Agree)

N	Valid	446
	Missing	8
Mean		3.59
Std. Deviation		1.438

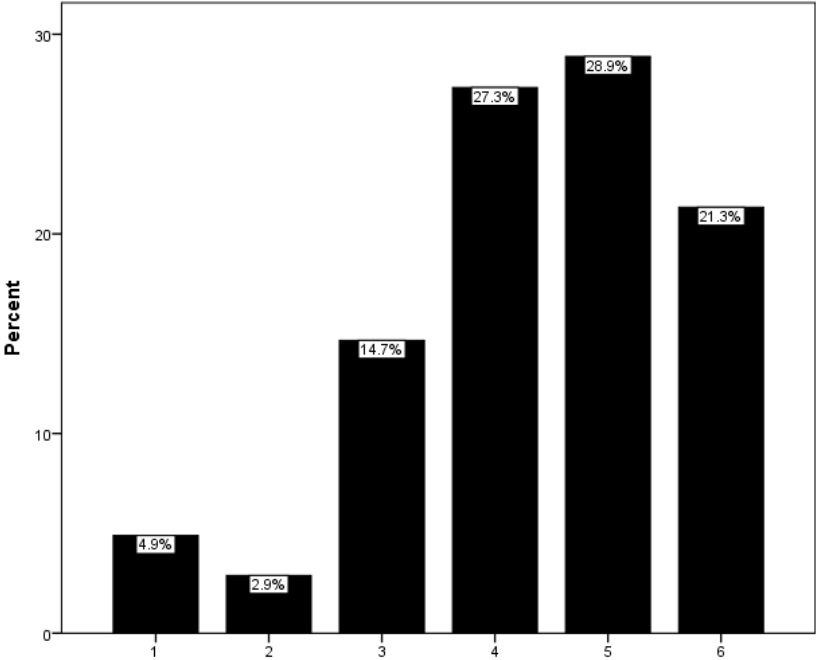
		Frequency	Percent	Valid Percent
Valid	1	44	9.7	9.9
	2	59	13.0	13.2
	3	102	22.5	22.9
	4	122	26.9	27.4
	5	71	15.6	15.9
	6	48	10.6	10.8
	Total	446	98.2	100.0
Missing		8	1.8	
Total		454	100.0	



[CMG10] My experiences at SMSU have helped me realize that when members of my group disagree on how to solve a problem, I like to try to build consensus.
 (1=Strongly Disagree; 6=Strongly Agree)

N	Valid	450
	Missing	4
Mean		4.36
Std. Deviation		1.310

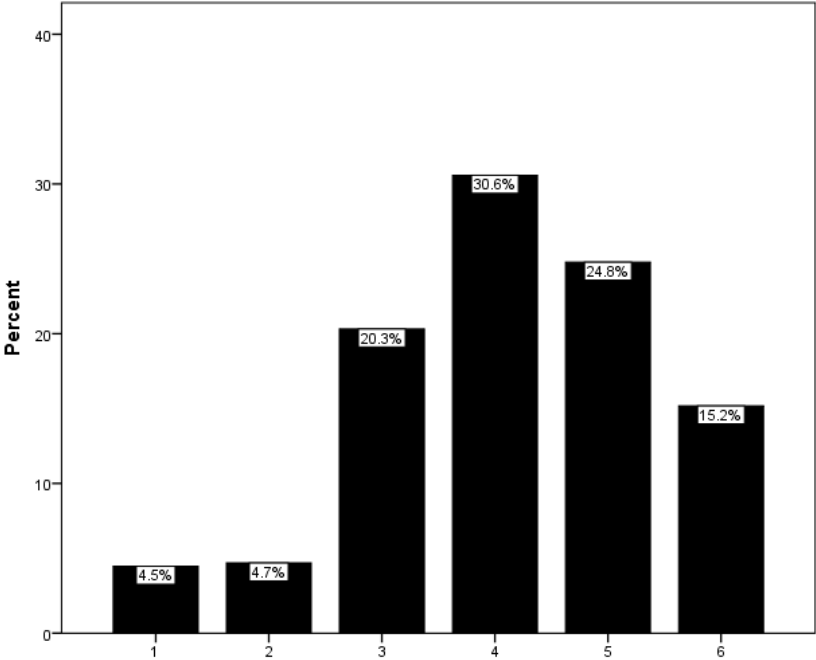
		Frequency	Percent	Valid Percent
Valid	1	22	4.8	4.9
	2	13	2.9	2.9
	3	66	14.5	14.7
	4	123	27.1	27.3
	5	130	28.6	28.9
	6	96	21.1	21.3
	Total	450	99.1	100.0
Missing		4	0.9	
Total		454	100.0	



[CMG11] My education at SMSU has made me aware of a number of community issues that need to be addressed.
 (1=Strongly Disagree; 6=Strongly Agree)

N	Valid	448
	Missing	6
Mean		4.12
Std. Deviation		1.279

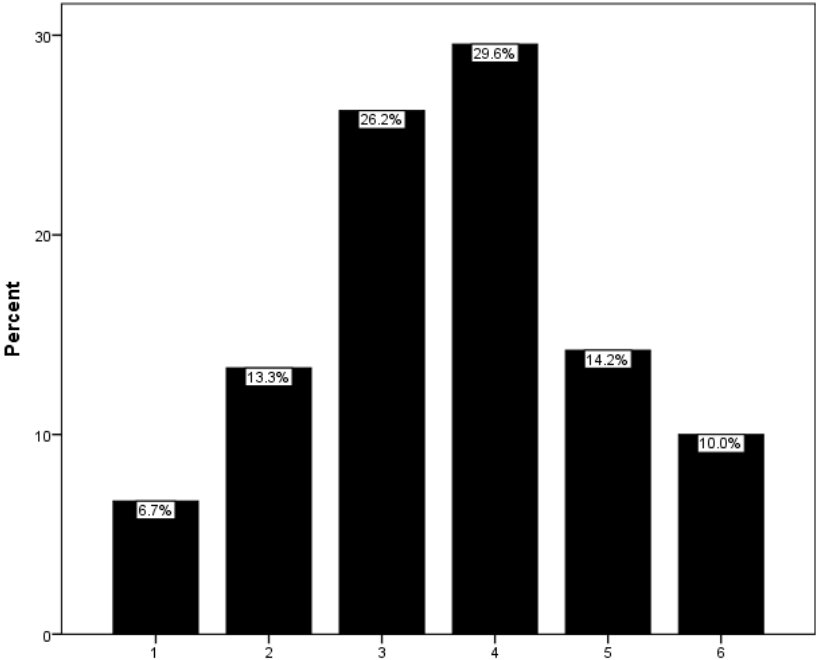
		Frequency	Percent	Valid Percent
Valid	1	20	4.4	4.5
	2	21	4.6	4.7
	3	91	20.0	20.3
	4	137	30.2	30.6
	5	111	24.4	24.8
	6	68	15.0	15.2
	Total	448	98.7	100.0
Missing		6	1.3	
Total		454	100.0	



[CMG12] My experiences at SMSU have increased my motivation to participate in advocacy or political action groups after I graduate.
 (1=Strongly Disagree; 6=Strongly Agree)

N	Valid	450
	Missing	4
Mean		3.61
Std. Deviation		1.339

		Frequency	Percent	Valid Percent
Valid	1	30	6.6	6.7
	2	60	13.2	13.3
	3	118	26.0	26.2
	4	133	29.3	29.6
	5	64	14.1	14.2
	6	45	9.9	10.0
	Total	450	99.1	100.0
Missing		4	0.9	
Total		454	100.0	

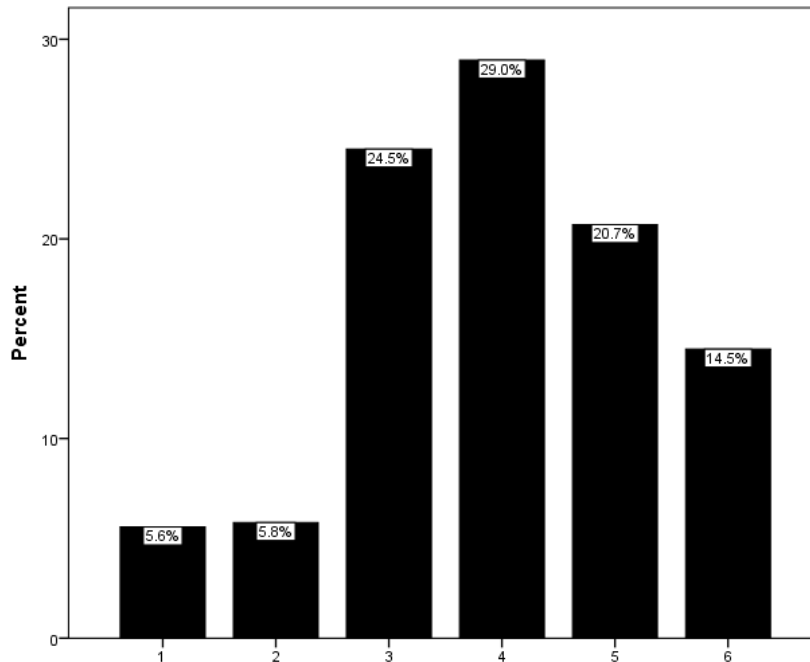


[CMG13] Through my experiences at SMSU, I am very familiar with clubs and organizations that encourage and support community involvement for college students.

(1=Strongly Disagree; 6=Strongly Agree)

N	Valid	449
	Missing	5
Mean		3.97
Std. Deviation		1.329

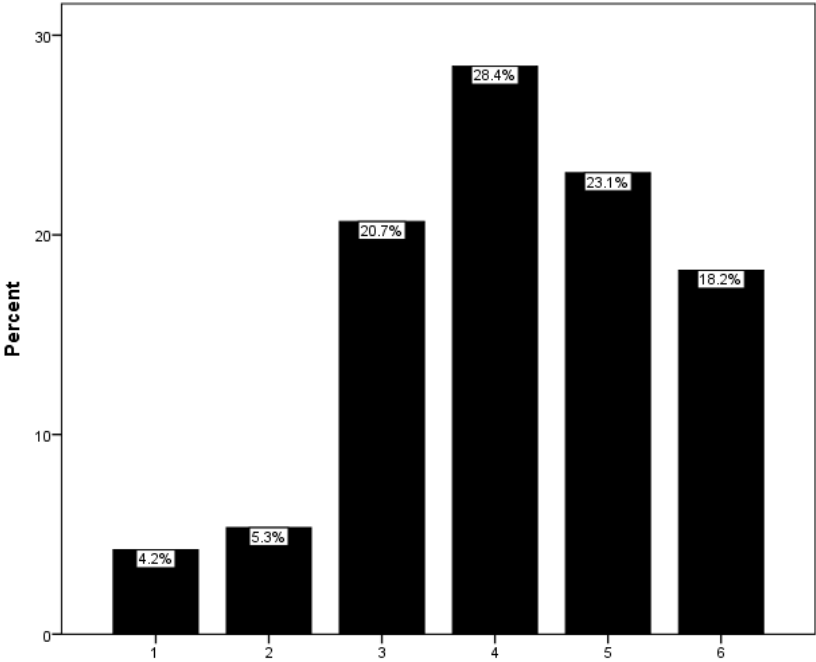
		Frequency	Percent	Valid Percent
Valid	1	25	5.5	5.6
	2	26	5.7	5.8
	3	110	24.2	24.5
	4	130	28.6	29.0
	5	93	20.5	20.7
	6	65	14.3	14.5
	Total	449	98.9	100.0
Missing		5	1.1	
Total		454	100.0	



[CMG14] My SMSU experiences helped me realize that I like to be involved in addressing community issues.
(1=Strongly Disagree; 6=Strongly Agree)

N	Valid	450
	Missing	4
Mean		4.16
Std. Deviation		1.319

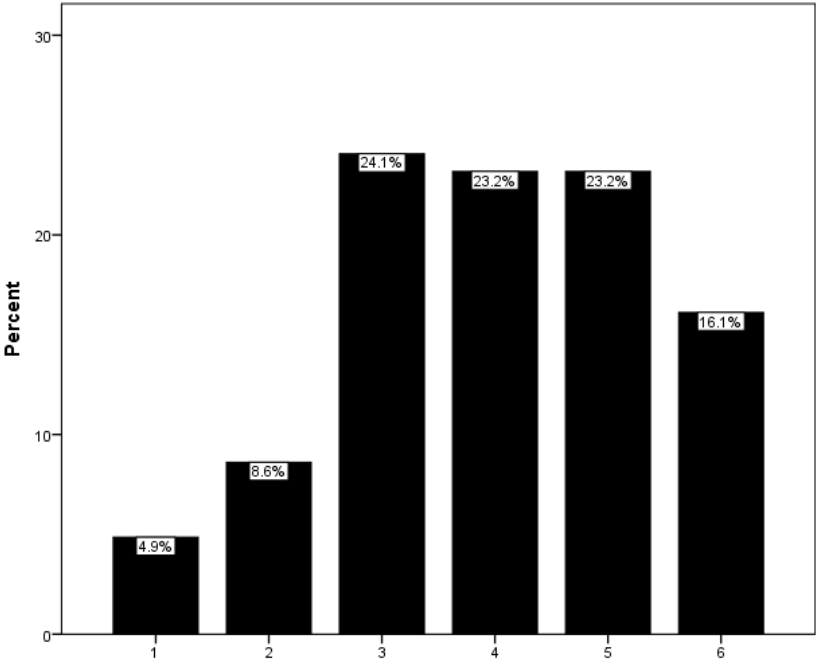
		Frequency	Percent	Valid Percent
Valid	1	19	4.2	4.2
	2	24	5.3	5.3
	3	93	20.5	20.7
	4	128	28.2	28.4
	5	104	22.9	23.1
	6	82	18.1	18.2
	Total	450	99.1	100.0
Missing		4	0.9	
Total		454	100.0	



[CMG15] Because of the experiences at SMSU, I believe that having an impact on community problems is within my reach.
 (1=Strongly Disagree; 6=Strongly Agree)

N	Valid	453
	Missing	1
Mean		4.00
Std. Deviation		1.379

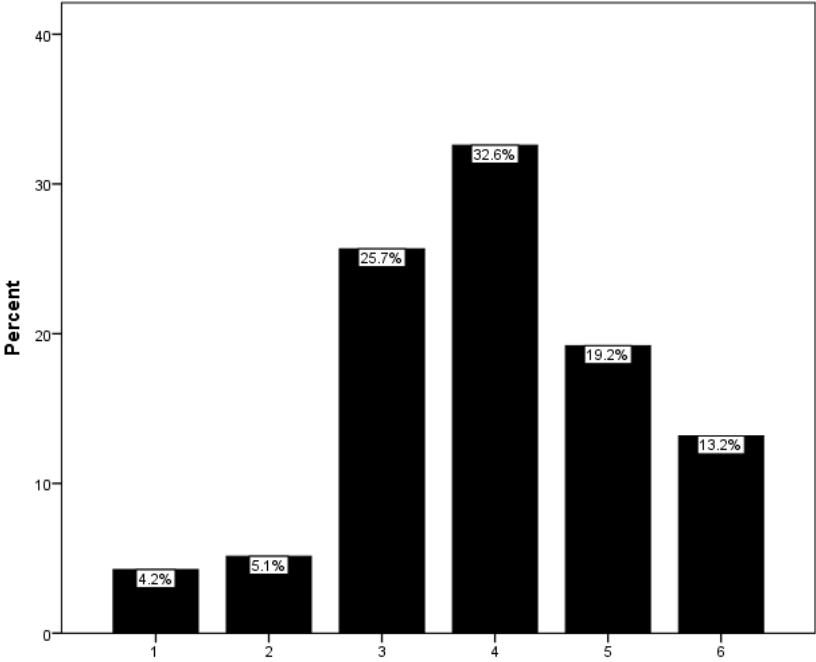
		Frequency	Percent	Valid Percent
Valid	1	22	4.8	4.9
	2	39	8.6	8.6
	3	109	24.0	24.1
	4	105	23.1	23.2
	5	105	23.1	23.2
	6	73	16.1	16.1
	Total	453	99.8	100.0
Missing		1	0.2	
Total		454	100.0	



[CMG16] Because of my SMSU experiences, I plan to stay current with the local and national news after I graduate.
 (1=Strongly Disagree; 6=Strongly Agree)

N	Valid	448
	Missing	6
Mean		3.97
Std. Deviation		1.251

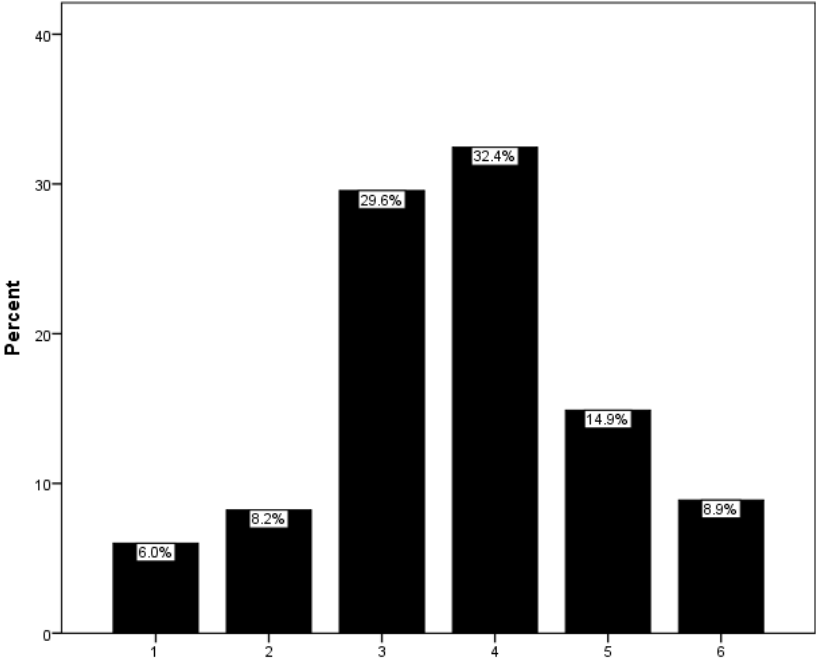
		Frequency	Percent	Valid Percent
Valid	1	19	4.2	4.2
	2	23	5.1	5.1
	3	115	25.3	25.7
	4	146	32.2	32.6
	5	86	18.9	19.2
	6	59	13.0	13.2
	Total	448	98.7	100.0
Missing		6	1.3	
Total		454	100.0	



[CMG17] My experiences at SMSU have enabled me to plan or help implement an initiative that improves the community.
 (1=Strongly Disagree; 6=Strongly Agree)

N	Valid	450
	Missing	4
Mean		3.69
Std. Deviation		1.255

		Frequency	Percent	Valid Percent
Valid	1	27	5.9	6.0
	2	37	8.1	8.2
	3	133	29.3	29.6
	4	146	32.2	32.4
	5	67	14.8	14.9
	6	40	8.8	8.9
	Total	450	99.1	100.0
Missing		4	0.9	
Total		454	100.0	

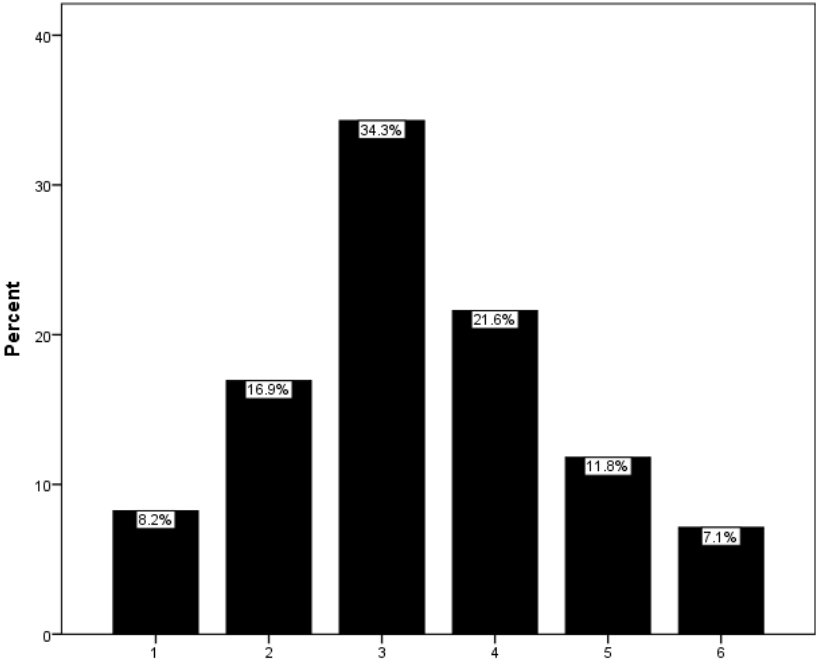


[CMG18] My experiences at SMSU have helped me realize that I prefer to work in settings in which I interact with people who are very different from me.

(1=Strongly Disagree; 6=Strongly Agree)

N	Valid	449
	Missing	5
Mean		3.33
Std. Deviation		1.312

		Frequency	Percent	Valid Percent
Valid	1	37	8.1	8.2
	2	76	16.7	16.9
	3	154	33.9	34.3
	4	97	21.4	21.6
	5	53	11.7	11.8
	6	32	7.0	7.1
	Total	449	98.9	100.0
Missing		5	1.1	
Total		454	100.0	

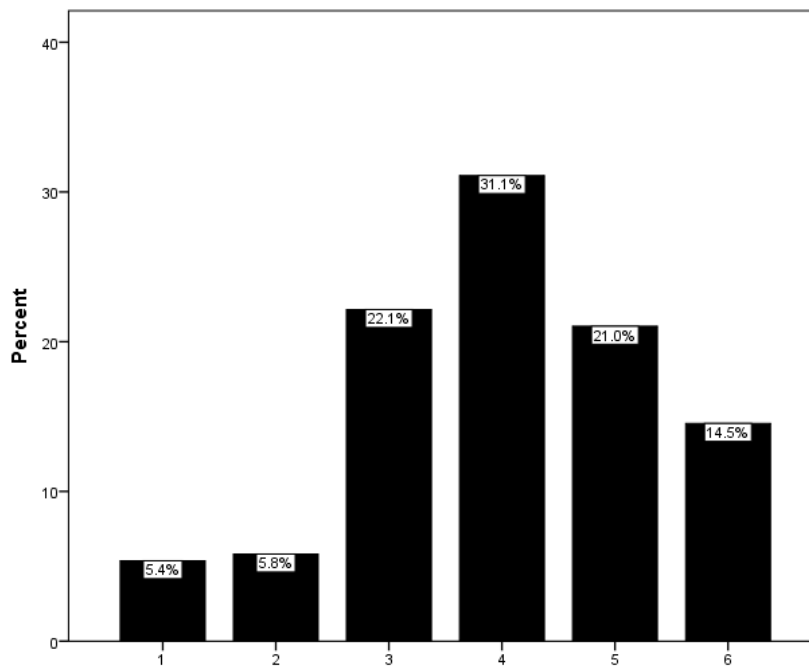


[CMG19] Because of the experiences I have had at SMSU, I feel a deep conviction in my career goals to achieve purposes beyond my own self-interest.

(1=Strongly Disagree; 6=Strongly Agree)

N	Valid	447
	Missing	7
Mean		4.00
Std. Deviation		1.317

		Frequency	Percent	Valid Percent
Valid	1	24	5.3	5.4
	2	26	5.7	5.8
	3	99	21.8	22.1
	4	139	30.6	31.1
	5	94	20.7	21.0
	6	65	14.3	14.5
	Total	447	98.5	100.0
Missing		7	1.5	
Total		454	100.0	

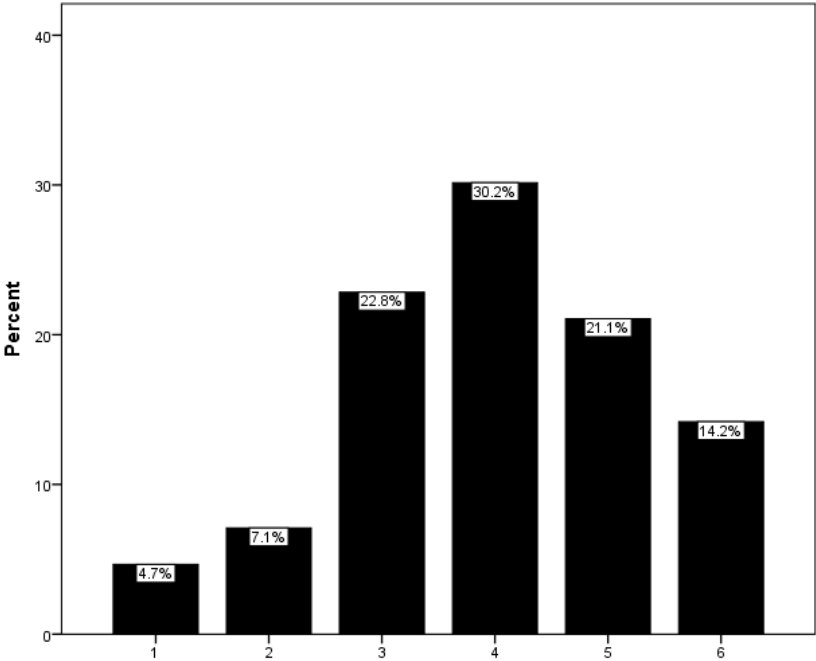


[CMG20] My experiences at SMSU have helped me develop my ability to respond to others with empathy, regardless of their backgrounds.

(1=Strongly Disagree; 6=Strongly Agree)

N	Valid	451
	Missing	3
Mean		3.98
Std. Deviation		1.309

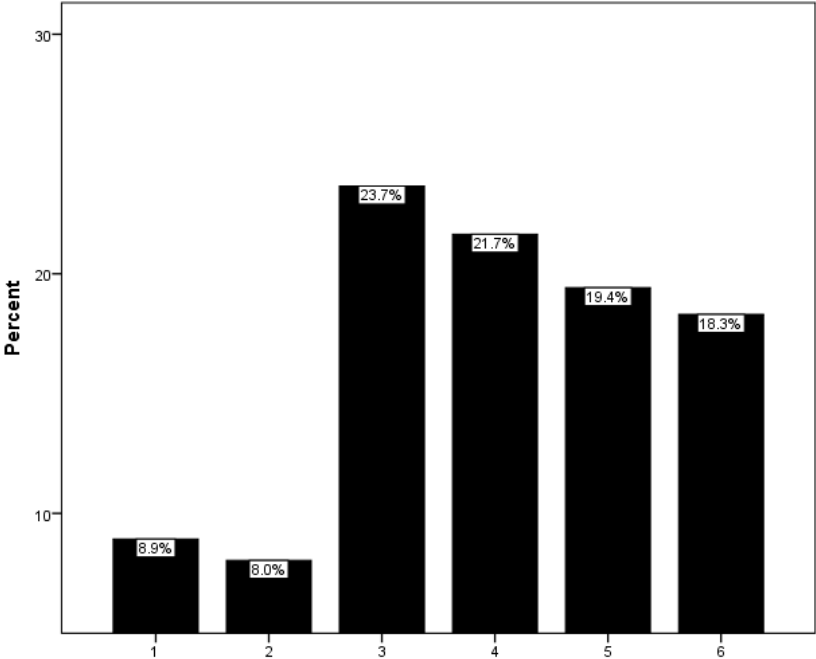
	Frequency	Percent	Valid Percent
Valid 1	21	4.6	4.7
2	32	7.0	7.1
3	103	22.7	22.8
4	136	30.0	30.2
5	95	20.9	21.1
6	64	14.1	14.2
Total	451	99.3	100.0
Missing	3	0.7	
Total	454	100.0	



[CMG21] Because of my experiences at SMSU, I intend to be involved in volunteer service after I graduate.
 (1=Strongly Disagree; 6=Strongly Agree)

N	Valid	448
	Missing	6
Mean		3.90
Std. Deviation		1.511

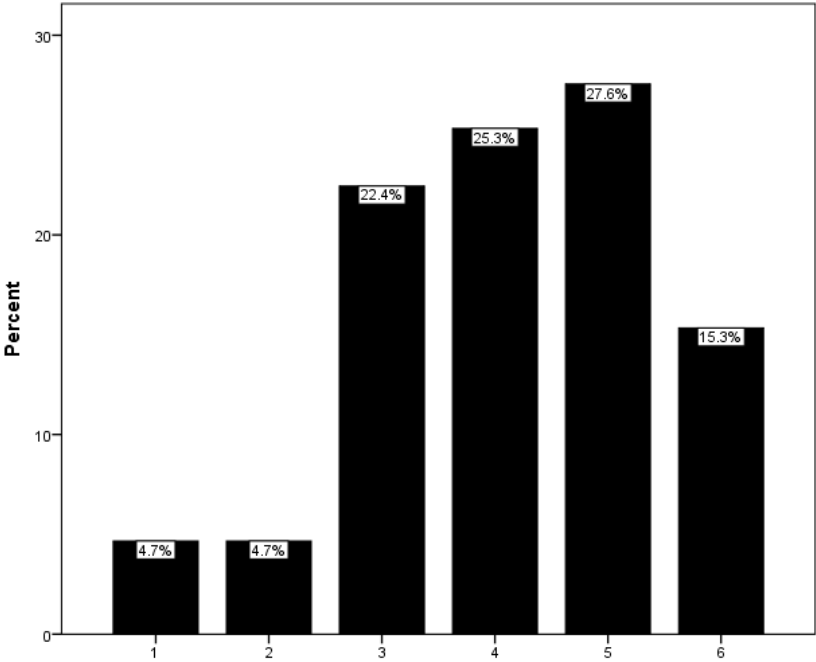
		Frequency	Percent	Valid Percent
Valid	1	40	8.8	8.9
	2	36	7.9	8.0
	3	106	23.3	23.7
	4	97	21.4	21.7
	5	87	19.2	19.4
	6	82	18.1	18.3
	Total	448	98.7	100.0
Missing		6	1.3	
Total		454	100.0	



[CMG22] My education at SMSU has motivated me to stay up to date on the current political issues in the community.
 (1=Strongly Disagree; 6=Strongly Agree)

N	Valid	450
	Missing	4
Mean		4.12
Std. Deviation		1.307

		Frequency	Percent	Valid Percent
Valid	1	21	4.6	4.7
	2	21	4.6	4.7
	3	101	22.2	22.4
	4	114	25.1	25.3
	5	124	27.3	27.6
	6	69	15.2	15.3
	Total	450	99.1	100.0
Missing		4	0.9	
Total		454	100.0	

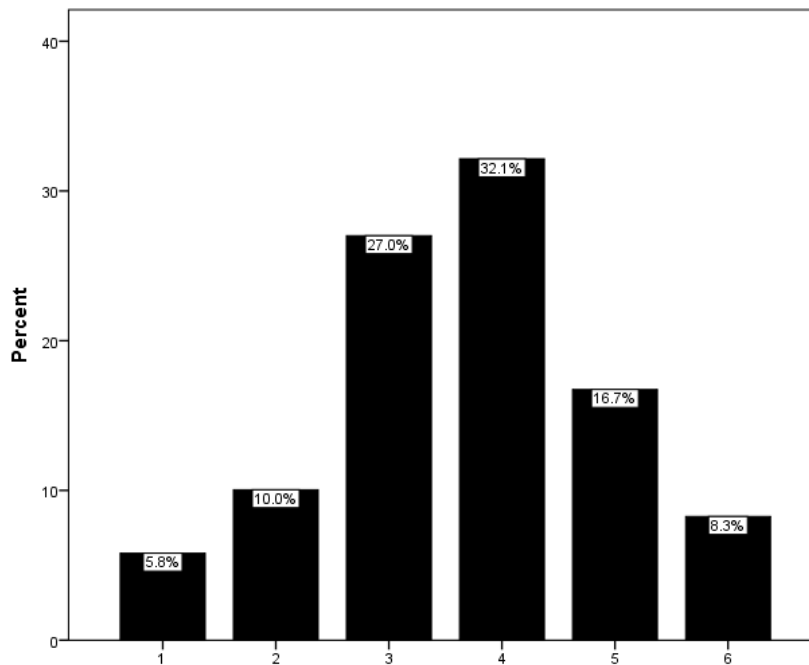


[CMG23] My SMSU education has convinced me that social problems are not too complex for me to help solve.

(1=Strongly Disagree; 6=Strongly Agree)

N	Valid	448
	Missing	6
Mean		3.69
Std. Deviation		1.264

		Frequency	Percent	Valid Percent
Valid	1	26	5.7	5.8
	2	45	9.9	10.0
	3	121	26.7	27.0
	4	144	31.7	32.1
	5	75	16.5	16.7
	6	37	8.1	8.3
	Total	448	98.7	100.0
Missing		6	1.3	
Total		454	100.0	

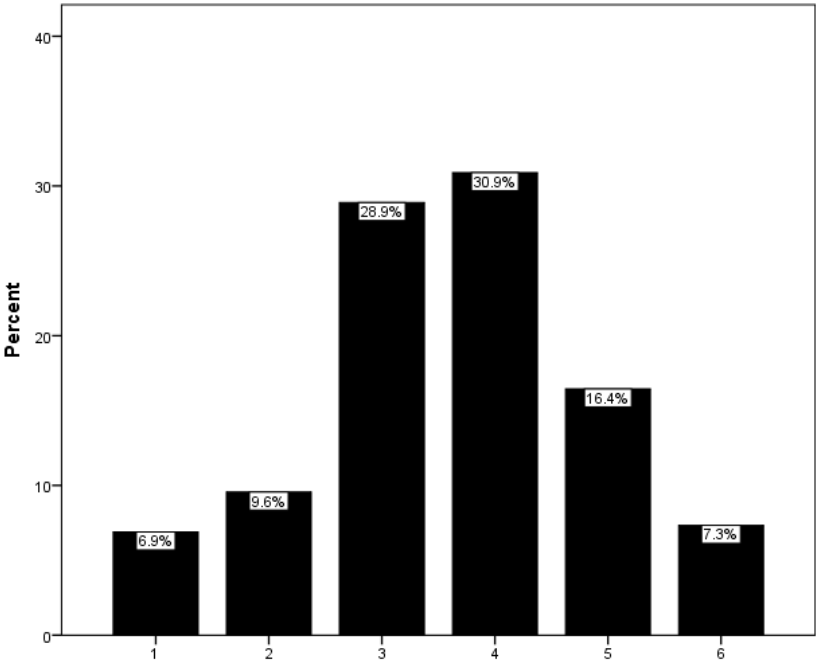


[CMG24] I believe that I have a responsibility to use the knowledge that I have gained at SMSU to serve others.

(1=Strongly Disagree; 6=Strongly Agree)

N	Valid	450
	Missing	4
Mean		3.62
Std. Deviation		1.269

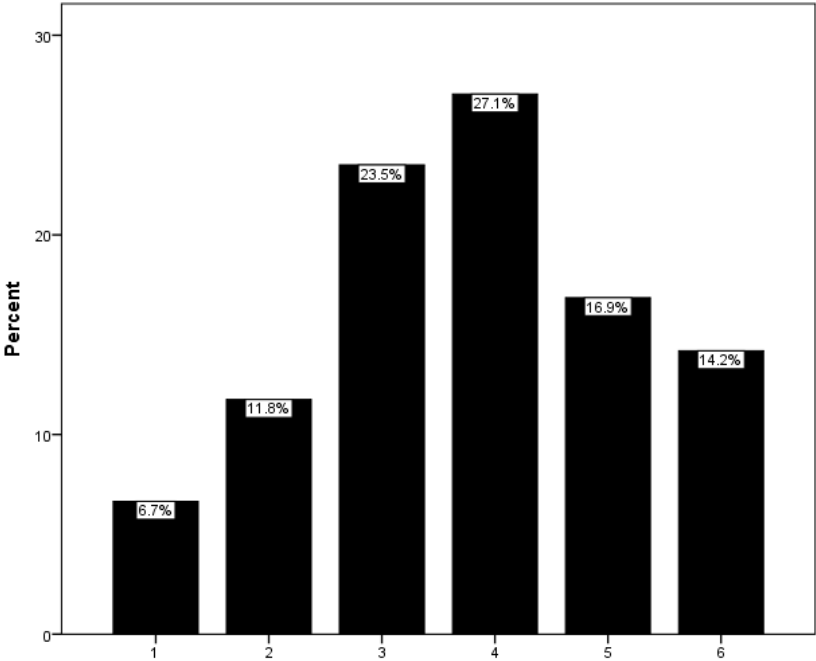
		Frequency	Percent	Valid Percent
Valid	1	31	6.8	6.9
	2	43	9.5	9.6
	3	130	28.6	28.9
	4	139	30.6	30.9
	5	74	16.3	16.4
	6	33	7.3	7.3
	Total	450	99.1	100.0
Missing		4	0.9	
Total		454	100.0	



[CMG25] My SMSU education has prepared me to listen to others and understand their perspective on controversial issues.
 (1=Strongly Disagree; 6=Strongly Agree)

N	Valid	451
	Missing	3
Mean		3.78
Std. Deviation		1.413

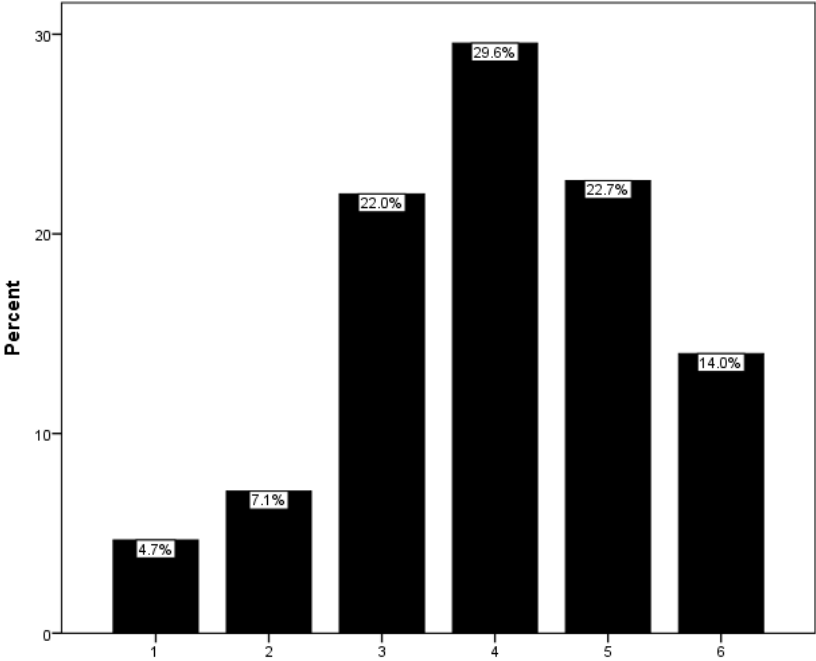
		Frequency	Percent	Valid Percent
Valid	1	30	6.6	6.7
	2	53	11.7	11.8
	3	106	23.3	23.5
	4	122	26.9	27.1
	5	76	16.7	16.9
	6	64	14.1	14.2
	Total	451	99.3	100.0
Missing		3	0.7	
Total		454	100.0	



[CMG26] Based on my experiences at SMSU, I would say that the main purposes of work are to improve society through my career.
 (1=Strongly Disagree; 6=Strongly Agree)

N	Valid	450
	Missing	4
Mean		4.00
Std. Deviation		1.310

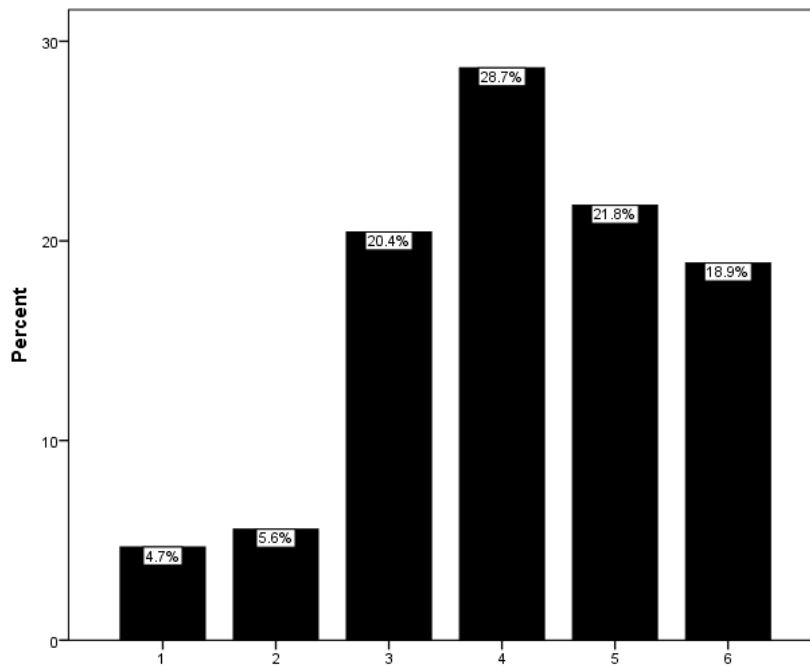
		Frequency	Percent	Valid Percent
Valid	1	21	4.6	4.7
	2	32	7.0	7.1
	3	99	21.8	22.0
	4	133	29.3	29.6
	5	102	22.5	22.7
	6	63	13.9	14.0
	Total	450	99.1	100.0
Missing		4	0.9	
Total		454	100.0	



[CMG27] As a result of my experiences at SMSU, I want to dedicate my career to improving society.
 (1=Strongly Disagree; 6=Strongly Agree)

N	Valid	450
	Missing	4
Mean		4.14
Std. Deviation		1.343

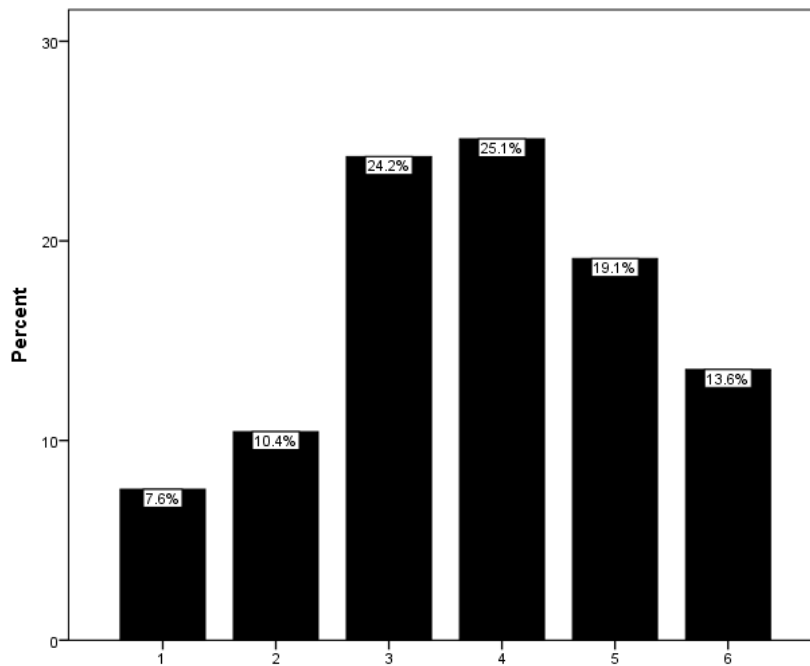
		Frequency	Percent	Valid Percent
Valid	1	21	4.6	4.7
	2	25	5.5	5.6
	3	92	20.3	20.4
	4	129	28.4	28.7
	5	98	21.6	21.8
	6	85	18.7	18.9
	Total	450	99.1	100.0
Missing		4	0.9	
Total		454	100.0	



[CMG28] After being a student at SMSU, I feel confident that I will be able to apply what I have learned in my classes to solve real problems in society.
 (1=Strongly Disagree; 6=Strongly Agree)

N	Valid	450
	Missing	4
Mean		3.78
Std. Deviation		1.425

		Frequency	Percent	Valid Percent
Valid	1	34	7.5	7.6
	2	47	10.4	10.4
	3	109	24.0	24.2
	4	113	24.9	25.1
	5	86	18.9	19.1
	6	61	13.4	13.6
	Total	450	99.1	100.0
Missing		4	0.9	
Total		454	100.0	

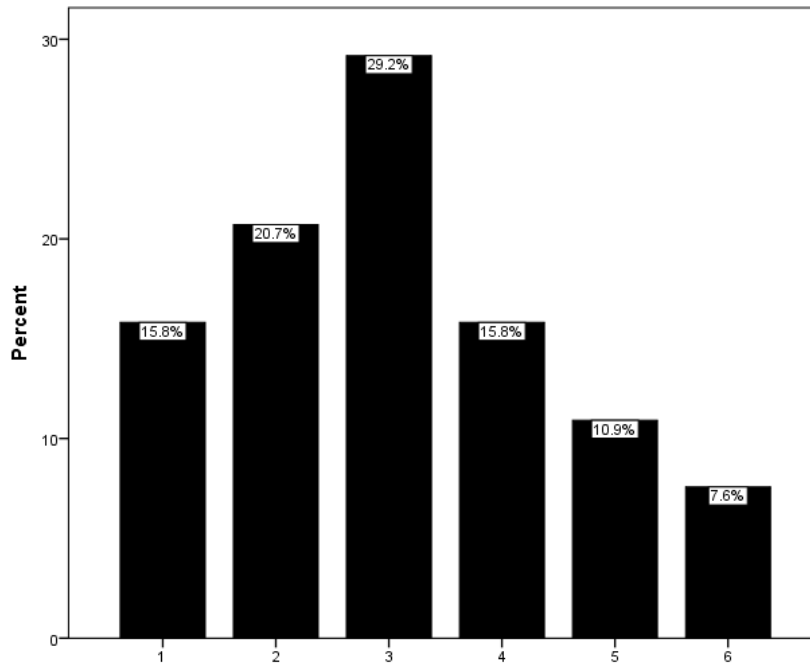


[CMG29] When discussing controversial social issues during my time at SMSU, I have often been able to persuade others to agree with my point of view.

(1=Strongly Disagree; 6=Strongly Agree)

N	Valid	449
	Missing	5
Mean		3.08
Std. Deviation		1.454

		Frequency	Percent	Valid Percent
Valid	1	71	15.6	15.8
	2	93	20.5	20.7
	3	131	28.9	29.2
	4	71	15.6	15.8
	5	49	10.8	10.9
	6	34	7.5	7.6
	Total	449	98.9	100.0
Missing		5	1.1	
Total		454	100.0	

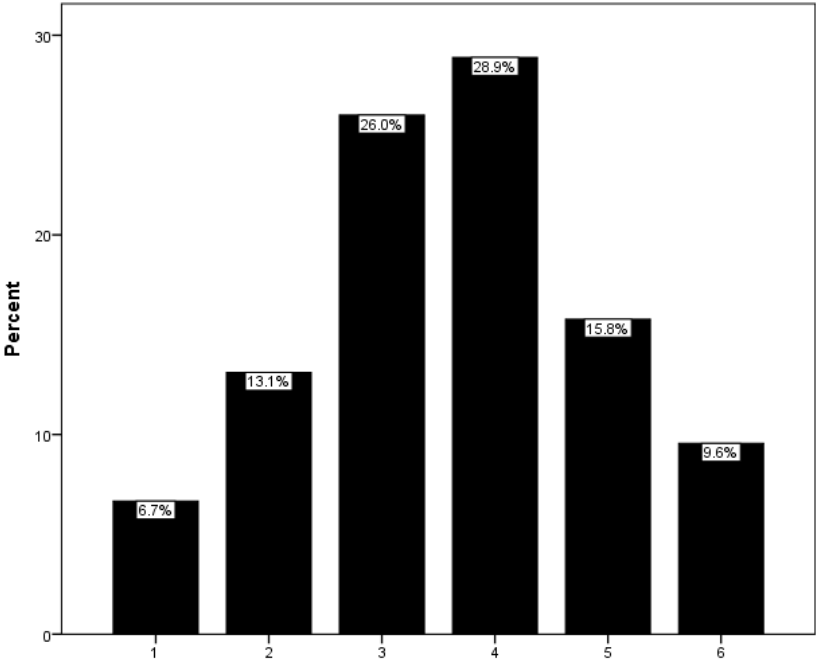


[CMG30] My SMSU experiences have helped me develop a sense of who I am, which now includes a sincere desire to be of service to others.

(1=Strongly Disagree; 6=Strongly Agree)

N	Valid	450
	Missing	4
Mean		3.63
Std. Deviation		1.338

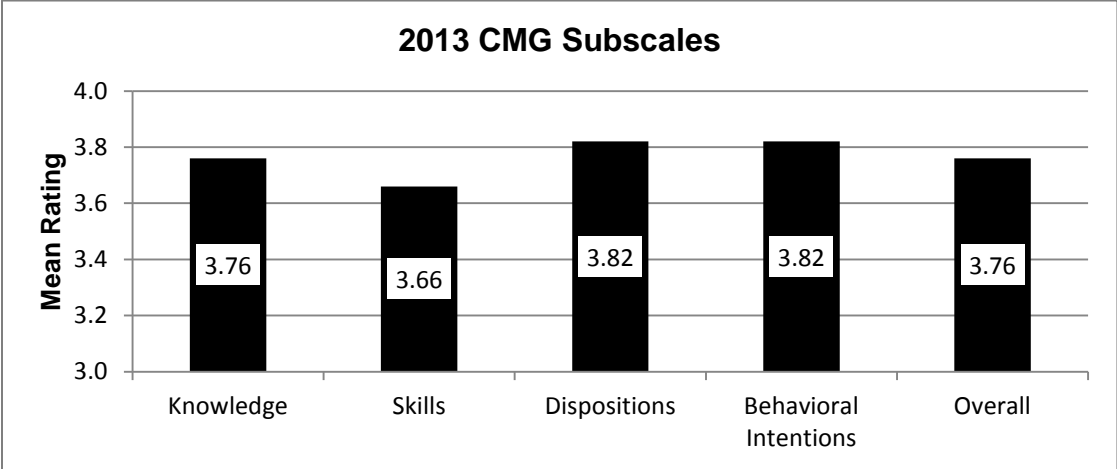
	Frequency	Percent	Valid Percent
Valid 1	30	6.6	6.7
2	59	13.0	13.1
3	117	25.8	26.0
4	130	28.6	28.9
5	71	15.6	15.8
6	43	9.5	9.6
Total	450	99.1	100.0
Missing	4	0.9	
Total	454	100.0	



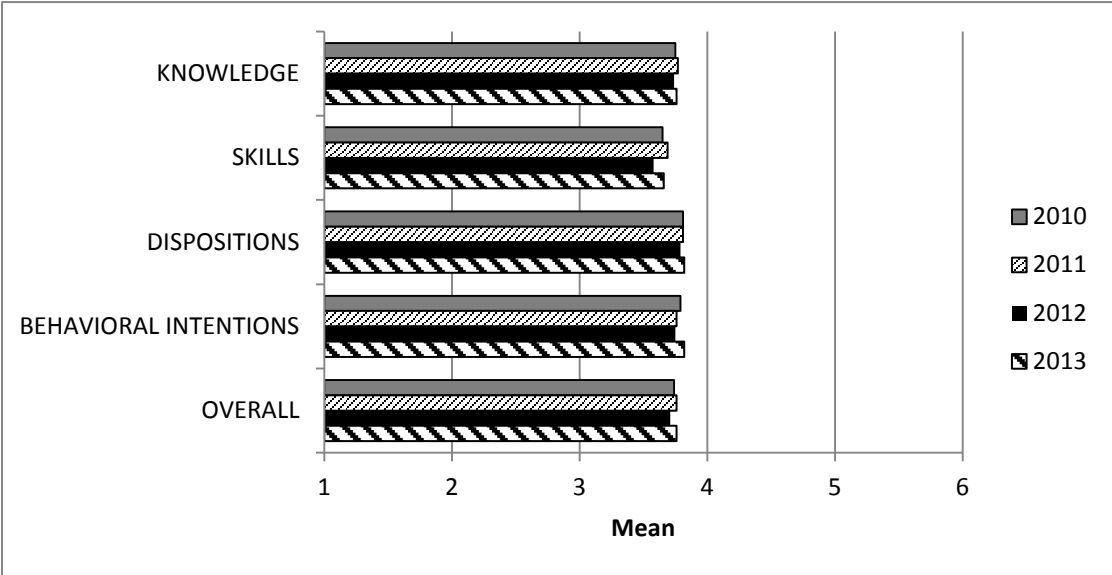
CMG Subscale Scores

Summary of Ratings and Trend Analysis

(1=Strongly Disagree; 6=Strongly Agree)



Subscale	2010	2011	2012	2013
KNOWLEDGE	3.75	3.77	3.74	3.76
SKILLS	3.65	3.69	3.58	3.66
DISPOSITIONS	3.81	3.81	3.79	3.82
BEHAVIORAL INTENTIONS	3.79	3.76	3.75	3.82
OVERALL	3.74	3.76	3.71	3.76

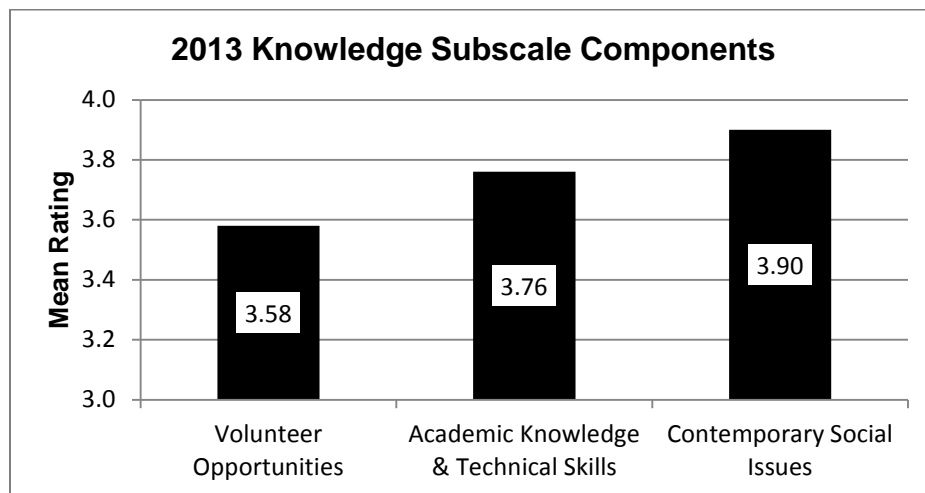


Components for each subscale are presented on subsequent pages. The Behavioral Intentions subscale has no components.

2013 Knowledge Subscale

(1=Strongly Disagree; 6=Strongly Agree)

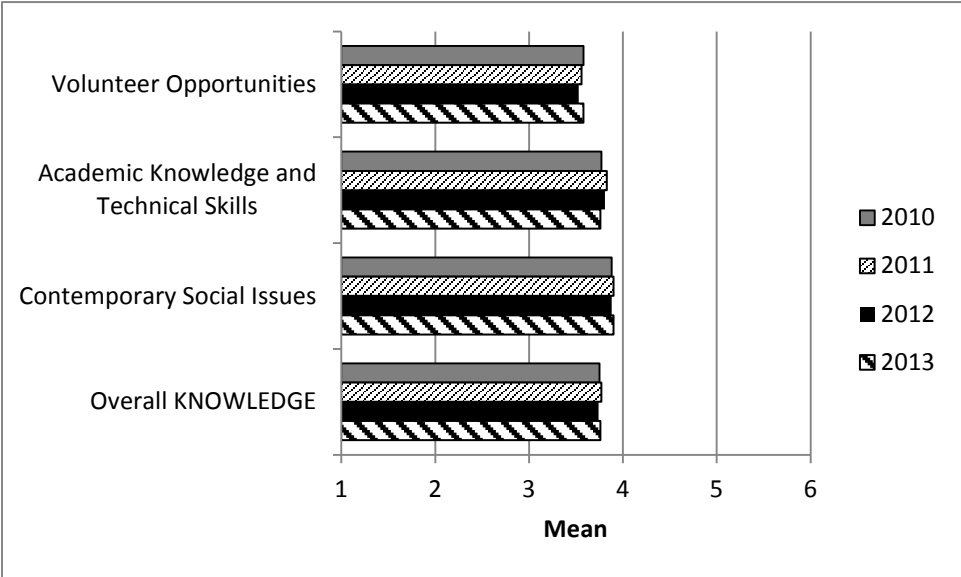
Survey Item	Mean
Volunteer Opportunities	
[CMG1] My experiences at SMSU have helped me know a lot about opportunities to become involved in the community.	3.36
[CMG6] Based on my experience at SMSU, I would say that most other students know less about community organizations and volunteer opportunities than I do.	3.41
[CMG13] Through my experiences at SMSU, I am very familiar with clubs and organizations that encourage and support community involvement for college students.	3.97
Academic Knowledge and Technical Skills	
[CMG4] My SMSU education has given me the professional knowledge and skills that I need to help address community issues.	3.81
[CMG17] My experiences at SMSU have enabled me to plan or help implement an initiative that improves the community.	3.69
[CMG28] After being a student at SMSU, I feel confident that I will be able to apply what I have learned in my classes to solve real problems in society.	3.78
Contemporary Social Issues	
[CMG3] My experiences at SMSU have prepared me to write a letter to the newspaper or community leaders about a community issue.	3.47
[CMG11] My education at SMSU has made me aware of a number of community issues that need to be addressed.	4.12
[CMG22] My education at SMSU has motivated me to stay up to date on the current political issues in the community	4.12



Knowledge Subscale Trend Analysis

(1=Strongly Disagree; 6=Strongly Agree)

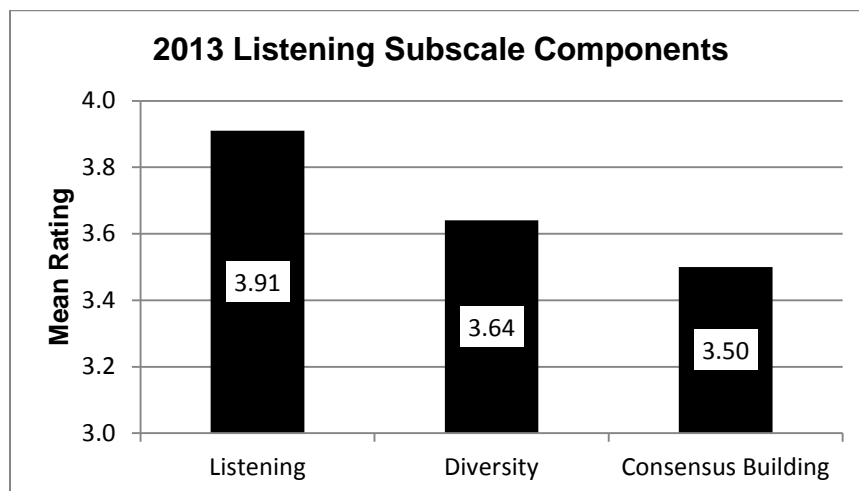
Subscale Components	2010	2011	2012	2013
Volunteer Opportunities	3.58	3.56	3.53	3.58
Academic Knowledge and Technical Skills	3.77	3.83	3.81	3.76
Contemporary Social Issues	3.88	3.90	3.88	3.90
Overall KNOWLEDGE	3.75	3.77	3.74	3.76



2013 Skills Subscale

(1=Strongly Disagree; 6=Strongly Agree)

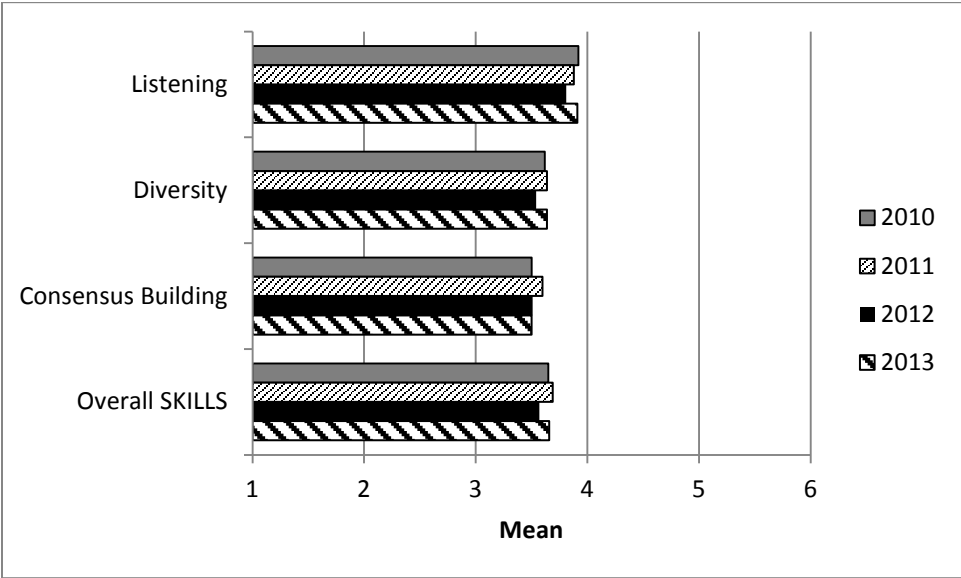
Survey Item	Mean
Listening	
[CMG5] My experiences at SMSU have helped make me a good listener, even when peoples' opinions are different from mine.	4.04
[CMG25] My SMSU education has prepared me to listen to others and understand their perspective on controversial issues.	3.78
Diversity	
[CMG9] My SMSU education has helped me appreciate how my community is enriched by having some cultural or ethnic diversity.	3.59
[CMG18] My experiences at SMSU have helped me realize that I prefer to work in settings in which I interact with people who are different from me.	3.33
[CMG20] My experiences at SMSU have helped me develop my ability to respond to others with empathy, regardless of their backgrounds.	3.98
Consensus Building	
[CMG2] As a result of my experiences at SMSU, other students who know me well would describe me as a person who can discuss controversial social issues with civility and respect.	3.08
[CMG10] My experiences at SMSU have helped me realize that when members of my group disagree on how to solve a problem, I like to try to build consensus.	4.36
[CMG29] When discussing controversial social issues at SMSU, I have often been able to persuade others to agree with my point of view.	3.08



Skills Subscale Trend Analysis

(1=Strongly Disagree; 6=Strongly Agree)

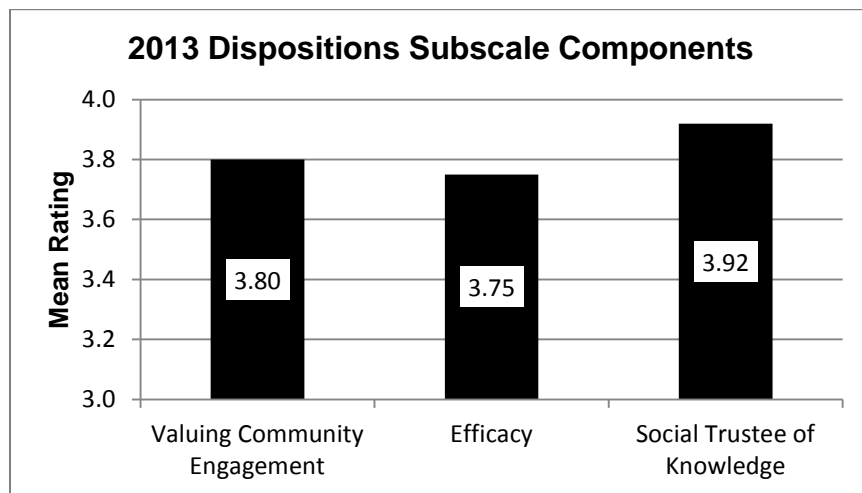
Subscale Components	2010	2011	2012	2013
Listening	3.92	3.88	3.81	3.91
Diversity	3.62	3.64	3.54	3.64
Consensus Building	3.50	3.60	3.51	3.50
Overall SKILLS	3.65	3.69	3.57	3.66



2013 Dispositions Subscale

(1=Strongly Disagree; 6=Strongly Agree)

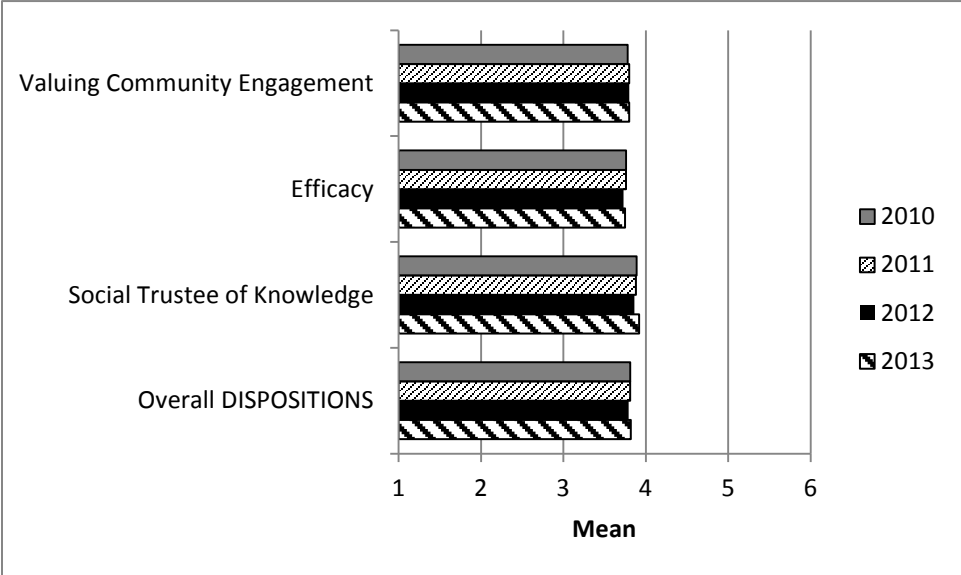
Survey Item	Mean
Valuing Community Engagement	
[CMG7] My experiences at SMSU have helped me realize that it is important for me to vote and be politically involved.	3.39
[CMG14] My SMSU experiences helped me to realize that I like to be involved in addressing community issues.	4.16
[CMG26] Based on my experiences at SMSU, I would say that the main purposes of work are to improve society through my career.	4.00
[CMG30] My SMSU experiences have helped me develop my sense of who I am, which now includes a sincere desire to be of service to others.	3.63
Efficacy	
[CMG8] My education at SMSU has increased my confidence that I can contribute to improving life in my community.	3.61
[CMG15] Because of my experiences at SMSU, I believe that having an impact on community problems is within my reach.	4.00
[CMG23] My SMSU education has convinced me that social problems are <u>not</u> too complex for me to help solve.	3.69
Social Trustee of Knowledge	
[CMG19] Because of the experiences I had at SMSU, I feel a deep conviction in my career goals to achieve purposes that are beyond my own self-interest.	4.00
[CMG24] I believe that I have a responsibility to use the knowledge I have gained at SMSU to serve others.	3.62
[CMG27] As a result of my experiences at SMSU, I want to dedicate my career to improving society.	4.14



Dispositions Subscale Trend Analysis

(1=Strongly Disagree; 6=Strongly Agree)

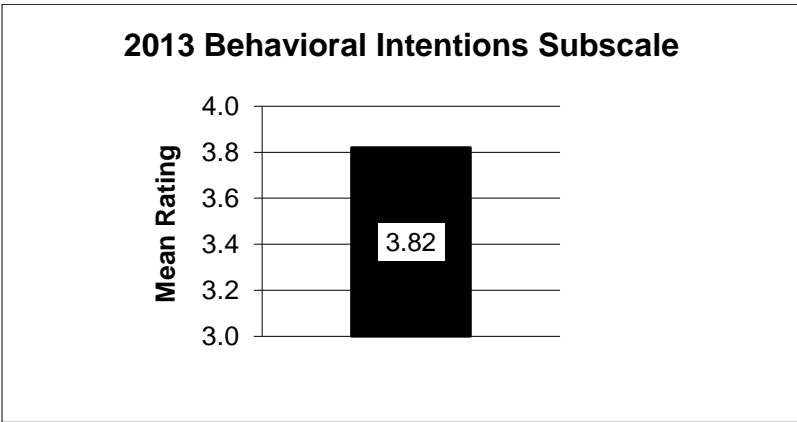
Subscale Components	2010	2011	2012	2013
Valuing Community Engagement	3.78	3.80	3.80	3.80
Efficacy	3.76	3.76	3.73	3.75
Social Trustee of Knowledge	3.89	3.88	3.86	3.92
Overall DISPOSITIONS	3.81	3.81	3.79	3.82



2013 Behavioral Intentions Subscale

(1=Strongly Disagree; 6=Strongly Agree)

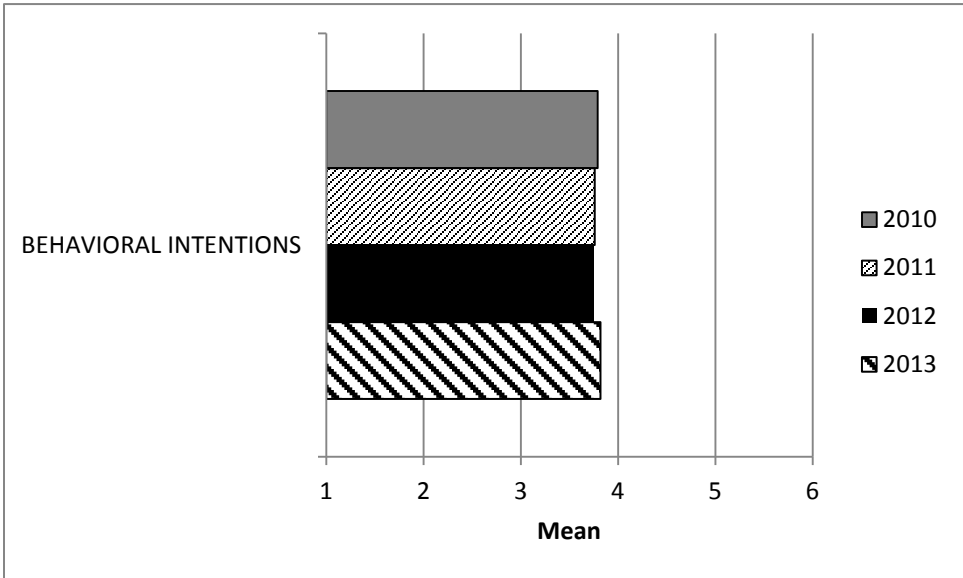
Survey Item	Mean
[CMG12] My experiences at SMSU have increased my motivation to participate in advocacy or political action groups after I graduate.	3.61
[CMG16] Because of my SMSU experiences, I plan to stay current with the local and national news after I graduate.	3.97
[CMG21] Because of my experiences at SMSU, I intend to be involved in volunteer service after I graduate.	3.90



Behavioral Intentions Subscale Trend Analysis

(1=Strongly Disagree; 6=Strongly Agree)

Subscale	2010	2011	2012	2013
BEHAVIORAL INTENTIONS	3.79	3.76	3.75	3.82



Section IV: Responsibility and Commitment

Section IV of the Civic Engagement Survey consisted of a single scale item and an open-ended prompt regarding students' feelings of responsibility and commitment to engage in civic engagement after leaving SMSU.

The scale item in this section of the survey was preceded by the following prompt:

Please indicate whether you agree or disagree with the following. 1= Strongly Disagree 6= Strongly Agree

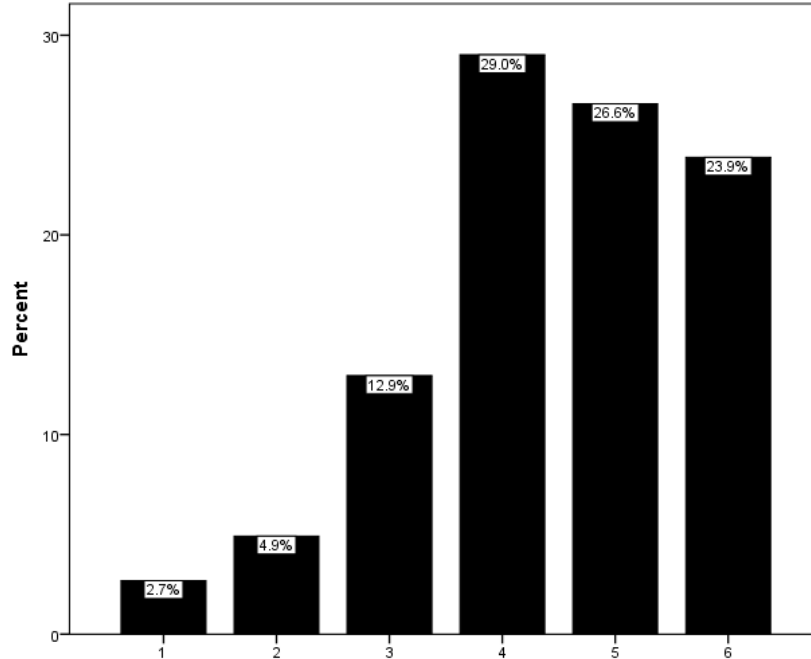
An additional prompt was included at the end of the survey to allow students to make additional comments.

Data for the scale item are presented here along with a trend analysis covering the last four academic years.

I have the responsibility and commitment to use the knowledge and skills I have gained through my education to collaborate with others to improve society.
 (1=Strongly Disagree; 6=Strongly Agree)

N	Valid	448
	Missing	6
Mean		4.44
Std. Deviation		1.266

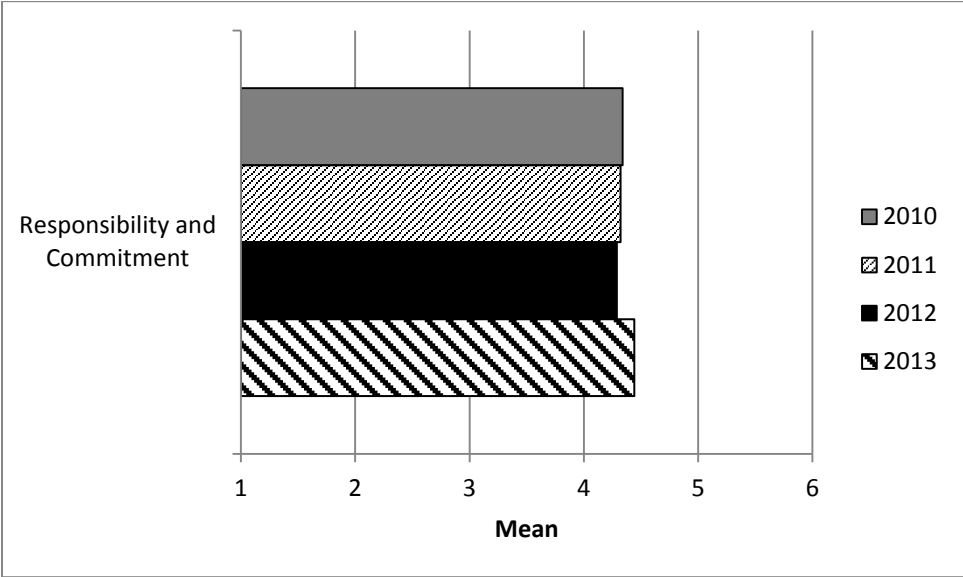
		Frequency	Percent	Valid Percent
Valid	1	12	2.6	2.7
	2	22	4.8	4.9
	3	58	12.8	12.9
	4	130	28.6	29.0
	5	119	26.2	26.6
	6	107	23.6	23.9
	Total	448	98.7	100.0
Missing		6	1.3	
Total		454	100.0	



Responsibility and Commitment Trend Analysis

(1=Strongly Disagree; 6=Strongly Agree)

	2010	2011	2012	2013
Mean	4.34	4.32	4.29	4.44



Please describe the ways in which you agree or disagree with this statement and provide a clear explanation of your opinions.

Participant Responses
After my education at SMSU I am very confident and well-seasoned to improve the society back home in India. I strongly agree with this statement.
All majors that come from SMSU have a well-rounded educated background that has set every graduate up for success.
Anytime you obtain knowledge and skills you should practice them to keep them in working condition. It is not my goal to improve society at but to make the improvements I can along the way.
As a civically involved member of society I have the responsibility to try to improve how we function and work together for the better good. My education has offered an experience that I would have never have experienced if I attended a school up in the Twin Cities. It has made me realized how close minded people are especially in smaller towns and how people can say they care but yet do nothing about it. It is up to each individual, as a child of God we must spread only good to others.
As a male coming from a place that many young males are lacking positive role models, I feel it's a responsibility of mine to be a positive model who they can relate to. Promoting education to its fullest and be a constant reminder that being a product of an environment can be something great. For I am a product of the environment in which I grew up in. They can achieve anything as long as they remain focused on education 1st and staying positively active amongst their peers and others.
As a strong supporter of equality, learning about many of the issues has angered me into wanting to make changes (for example, discrimination toward the GLBTA in not allowing these people to marry).
As a teacher I think it seems somewhat obvious as to why I think it's important to help educate others. I believe it is my responsibility to be the best I can be in order to help others do the same.
As an education major, I firmly believe that I am going to make a difference in society. While many of these skills were not learned at SMSU but rather during field experiences, I nevertheless believe that my time at SMSU has given me tools to be a great role model and leader
As an education student, we have to collaborate with other teachers and staff members. We also need to collaborate with students and parents.
As an Exercise Science Major I have the skills and knowledge to make a serious difference in my community or any community I choose to live in. The skills I learned can really change lives.
As long as it makes me money...
As per my personal perspectives.
Aside education, I have always been the type of person who likes to help people and collaborate with others.
At SMSU I have expanded my knowledge of what it takes to be a productive member of society and SMSU has given me the necessary skills to do so.
Be a good listener.
Because I am getting a major in exercise science I feel I have a duty to help others to get into shape and to help them live a healthy lifestyle
Because I have been given the opportunity to have a college education I believe it is my duty to use this knowledge to help others who are less fortunate, or want to learn and don't have the means to do so. I love to help children especially develop a strong sense of self-worth and confidence that a college education is within their reach regardless of their socio economic status.
Because it all about how you deal with others

Participant Responses
Being an educated college graduate makes you responsible to share your education with others and to help improve society as a whole. The opportunities and privileges education has provided me is not something everyone receives or is able to get.
Being the best that I can be will lead to others doing the same.
Business has become more widespread and defined. Global markets becoming competitive everyday, I will use all my knowledge I have gained in this institution to make business more fun, survive and thrive in today's competitive global market.
By being an active member in various clubs on campus, I have gained the best experience for myself to collaborate with others in my community and improve society.
By going to my classes that required me to speak up and have an opinion I feel I am more confident in speaking in front of people that I do not completely know and telling them how I feel and what my opinions are. If I have an idea about how to do a project I will speak up and let the group know what my idea is instead of staying in the background and not being heard.
By me going and getting a higher education, it is important that I use the skills that I have learned to make not only my future employment a better place, but the world as well.
By now obtaining my college degree I feel that It is my right and duty to help with anything I am asked of.
Collaboration in the field of education is vital to making improvements in classrooms and in our own teaching. If my students do not understand something, I should reflect on the task and ask myself "What is it that I am not teaching to help these students succeed? How can I teach this content differently?"
Do good for the society by doing charitable work
During my time at SMSU, I've learned the importance of contributing to society and the significance of helping others. I plan to carry these beliefs with me for the rest of my career and personal life.
Education is a group learning experience. Experiences are richer when shared, and together we can build a better future for ourselves and our future generations. Ignoring a problem in a community will not make it go away, but alerting others to the issue and working together to solve it might help.
Everyone should try to better society at least in some small way. Anyone who thinks otherwise is entitled to that opinion, and is also a parasite that should be removed from society.
First, I am not very good at working with other people. However, I know the impact I can have on individuals and when I put my talents to use I can influence them. And when you influence someone, you are changing their way of life and if you do that with enough people, you can change the world in which you live.
Helped me become a more critical thinker.
Helping build a strong society will only better the lives of others.
I agree because I have gained knowledge and social skill during my time at SMSU.
I agree because I plan on starting a non-profit organization after graduation
I agree because with the knowledge I have gained, others may have not. When issues arise in my community, and I may have a solution, I would be able to put forward that solution or at least volunteer my knowledge on the issue.
I agree that attending college and pursuing my education has helped me to communicate in social situation and at work
I agree that education that I have gotten here enables me and in a way obligates me to share my knowledge and convictions to support our society and improve everyone's living condition.
I agree that everything we do, whether through our career or way of living, should serve a greater purpose than our own. We should look to contribute to a better society for all to live in.

Participant Responses
I agree that I do have a commitment to improve the society. Improving society is a major factor in improving our own lives. Sometimes our work also calls for us to not improve society as a whole, but to improve our very own self. Sometimes this doesn't mean that we are obligated to improve society as a whole all the time, but rather in different steps. I do agree that we all have a commitment to improve society.
I agree that I have a responsibility and commitment to use the knowledge and skills that I have gained through my education to collaborate with others to improve society, because not everyone has the opportunity to go to college and I feel that those of us who do get that opportunity really need to share that education with others so we have work on improving our society through means in which have been research and taught in college. This way we can ensure the best possible society to live in.
I agree that I have the responsibility and the commitment to use the knowledge and skills I have gained for my job not necessarily making society better? Don't know where that came from...
I agree that I might be able to help improve society through my writing abilities. I do not know how I would do that at this time. I agree it is my responsibility to do all I can to help improve my community and to use skills that I have learned in doing so.
I agree that I will be able to use the knowledge and skill that I learned here at SMSU to benefit our society.
I agree that it is important to have intelligent people help improve society and through these five years at SMSU I feel that I have learned a lot about all aspects of life.
I agree that it is the responsibility of the members of society to improve society. But the word commitment is very vague. I am not committed to using my career to improve society, thought that would be a great thing, but I do intent to continually find ways that I am able to help society, but nothing to extreme where I'm committing my whole life to some cause.
I agree that SMSU has prepared me with the knowledge to improve society, but I don't necessarily agree that I have a responsibility to go out and use those skills. Now that doesn't mean I won't, I just don't think I should be pressured to do so.
I agree that with my degree in management I will be able to provide help to people seeking employment and will be able to clearly see issues in society and ways to resolve those issues. SMSU provided me with learning through teamwork which is the same way we should be trying to improve society.
I agree with the statement because I believe that I use my knowledge to help society through volunteering. I will be using my skills to help improve small rural communities in third world countries
I agree with the statement because some of the classes at SMSU have taught me to look for ways to collaborate with others in order to see issues that can be improved.
I agree with this because teachers need to collaborate with others to find out what is in the best interest of their students to help those students get the most out of their education.
I agree with this statement because I am now able to work with others and improve the health and fitness of groups of people. I agree with this statement because working with groups helps improve anything.
I agree with this statement because I am able to mold the minds of children and show them right from wrong. I feel that the environment in which students are raised in and what they learn at a young age will set them up for their future. I hope to have students that are committed to themselves and do their best/
I agree with this statement because I have learned a lot within my field of study since at SMSU, and I plan to apply that knowledge to better the field of work that I will be in.

Participant Responses
I agree with this statement because I plan on continuing my education to better address issues within society. My focus is on diversity, which have let me appreciate the differences among people within the community. I have also learned the importance of working with others in order to make improvements within society.
I agree with this statement because I was just recently elected to my hometown's city council.
I agree with this statement because if we try to affect the community or not we will affect it. I think that the people who don't want to affect the community affect it negatively and the people who want to affect it do it in a positive way. In either case you are affecting your community so it is better to affect it in a positive way than in negative way.
I agree with this statement because of my instructors more than the courses themselves. My instructors have helped me learn how to talk to people in a more professional manner outside of the academic area. This is what I believe will be most beneficial to me in the future.
I agree with this statement because the population of higher educated people should typically be the ones with the majority of power. They should then use that power to help society as a whole.
I agree with this statement because the purpose of attending college is to better society with your hard work and determination.
I agree with this statement because, coming from a poverty environment as a DELETED native it is my job and duty to give back to my community. I want to help the youth succeed and see the many accomplishments that I have already achieved so they can realize hard work pays off. I also want to explain I come from the same background and nothing is impossible as long as we keep a strong faith and believe.
I agree with this statement in the fact that I have a well-rounded background in finance, whether it be simply knowing terms or looking at cases and analyzing them. I disagree because I believe a lot of knowledge and skills gained are through experience and that the majority of them will come after graduation once in the work force.
I agree with this statement not only because of my education in the classroom, but also the things I learned at SMSU outside of the classroom. I think that the majority of growth in college happens because of experiences that involve real life events and the responsibility that comes with making the decisions that must be made to be successful in school, which translates into being able to be a successful graduate.
I agree with this statement wholeheartedly. It should be the main goal of any educated person to make the world a better place.
I agree with this statement, in essence, the primary purpose of graduating college is to accomplish this goal. I firmly believe that my college experience has transformed my thoughts and opinions into a way that will help improve society.
I agree with this statement. I think when we are in a position to help others and make society a better place, we should do so.
I agree, because with the discussions that we have had within the classes I have taken have set me up for this.
I Agree, I plan to use my college experiences to help others, and be an active and healthy worker within society.
I already have engaged in DELETED .

Participant Responses
I always use my experience and knowledge to collaborate with others. As I have aged (I am DELETED.), I have learned that giving more than you receive will always come back to you ten-fold. I will also say that administration and policies tend to hinder many of today's growth experiences. We need more common sense, fewer laws, less entitlement and more empathy in the world. Paperwork should never get in the way of anything. I am actively involved in my church as are my DELETED. I am a DELETED who works full-time and also went to school full-time. I have had to deal with medical issues during this time as well. It has been difficult, but well worth the struggles. I have also been involved with DELETED , my local newspaper (writing and photography) and our local sports associations. I still have found the time to attend almost every one of my DELETED. Life is good, technology is great when it works, and I am happy to no longer have homework to deal with!
I am committed to work with others to improve society and the community I live in through services in my local area. This commitment is driven by the desire of both me and my husband to improve the quality of life for all those around us.
I am excited to work with my church council to improve things in my congregation. It is a troubled time for us and I will be able to directly apply conflict management skills and interpersonal skills learned through SMSU classes.
I am neither here nor there. I believe the skills and knowledge I gained at SMSU are focused on the major I enrolled in. I see myself collaborating with others to improve society when the opportunity arises that has to do with my specific major but I don't see it as an everyday or every year thing.
I am responsible and am committed to improving society.
I believe everyone should be responsible to use their skills and knowledge to improve society. Why would anyone not want to live in a more improved society.
I believe I am at an incredible advantage to have received my education from SMSU. I have a responsibility to help improve my society to use my education to help contribute to the improvement of my community.
I believe I can help some how to build a better future for our children.
I believe I can improve society by helping them stay informed. With my degree in broadcast, I have knowledge about how to gain the story, get the word out, and make people know about situations that can affect them in their daily lives. I know what people want to hear and I can make sure I give them what they want to hear.
I believe I have the responsibility to help improve society whenever possible. Being ethical and social responsible are very important in business.
I believe I need to collaborate with others to help society. I do not believe I have gained these skills because of classes.
I believe in the potential to improve society through the connections I've made as SMSU. I agree that it is my responsibility as an educated citizen to make the world around me better.
I believe my entire education has helped me not just my SMSU education.
I believe that as a member of the society, the least I can do is by impacting the society positively. Therefore I want to be giving back to the society by working hard, doing my duties and helping those that I can help when possible.
I believe that each individual can bring a different mindset and idea to the table to create one general, preferred consensus.
I believe that it is everyone's responsibility to improve society.

Participant Responses
I believe that the goal of every society should be to improve on what is currently being done. If there is ever a time in which a society is stagnant with their improvements, that society has a tendency to decline and eventually fail. If I want the society that I live in to continue to prosper, I need to dedicate my life to improving it.
I believe the courses I have taken through SMSU and the connections I have made with professors and other staff have prepared me for the real world. I have had an amazing opportunity to gain experience with networking and teamwork during my time on campus. The assistance I been given at SMSU has helped me tremendously and has also helped me grow and improve my communication and organizational skills.
I believe this is true because everybody has a responsibility to contribute to society and do their part in the world.
I believe we are always going to be working with other people whether we are at work or at school. I believe we all should try to work together rather than working against each other so we don't spread hate. We are going to meet people that we don't always agree with, but if we can be open-minded about life, you will learn a lot about yourself and about other people that are different about you. I think that's always a plus. I enjoy meeting new people every day and I don't mind working with others. I do usually tend to keep opinions to myself though and go with the flow on whoever is willing to speak about it. I want to change something about that. But I know it'll be difficult because I'm a shy person.
I could spread out to everyone that working hard and not losing your hope will always lead to the bright future.
I do not agree that because of SMSU I will some of these things. I will do it because I want to. These questions do not make sense because of these statements saying I will or will not be because of the University I went to.
I do not feel personally responsible for solving my area's community and social problems. I do feel moderately obligated to help improve the community where I live. I would say that I feel If I can, within reason, I should help others.
I do not think that the classes I took have made me to collaborate with others to improve society.
I don't exactly see how I can improve society with my major. The only thing I feel that I could do that would help would be to offer what I can't use in my restaurant/bar to people who go hungry.
I don't necessarily feel that I have gained skills to improve society; however, I hope to someday go to medical school, and in that field, I hope to improve society.
I don't really understand the question other than answer treat others as you would like to be treated
I feel everyone should do their part to improve society. It helps keep society from crumbling.
I feel I can generate ideas to help our society as a whole through communication with other people.
I feel I have learned a lot about business which I have been using in my current position, and will use in my future endeavors as well.
I feel it is important for me to use my skills to better myself and be helpful to those around me.
I feel it is important to teach others. "Each one teach one".
I feel like after spending 4 years in college, I should use what I learned to make a difference. It may not be society as a whole, but make a difference in the field of study where I will be employed after college. The world we live in today is full of good and evil and each person can make a difference if they are committed. One of the ideas that I learned in almost every class I took at SMSU was to work with others. Not one person can change the world, but as a whole, we have the potential to do great things.

Participant Responses
I feel like the knowledge and skills I have gained from SMSU should be utilized by doing whatever I can, with the help of others, to indeed improve society. I feel like I have learned a lot here, in the classroom and outside of it too. I believe that benefits me in my life, and that I should use whatever I have to bring to the table to help others out as well.
I feel SMSU has brought to my attention several issues in our society that need to be addressed. I believe SMSU makes students aware of what is going on in our society.
I feel that a group united is more effective than a one person alone. Collaborating with others is a good way to have a greater voice. On the other hand there are some issues that are not worth fighting over and do not need to be worried about.
I feel that I have a small responsibility to society; mostly I have a responsibility to my family. I'm not that motivated to go out and get society to change but if I'm given the opportunity I will do it.
I feel that I have gained enough knowledge and skills to be able to collaborate with others in my future career and be able to improve society by the things I have been taught in my classes here at SMSU.
I feel that my experience at SMSU has not touched my opinions with society. I feel that none of my classes have affected my political views or how I interact within the community.
I feel that SMSU has pushed me out of my comfort zone and has made me a more outgoing person. Doing group projects, presentations, and speeches is what will happen in real life so it was a good experience to do this through classes and clubs.
I feel that society is developed by its members and with the education the members achieve the community benefits. As a college graduate, I feel it is my responsibility to infuse my earned knowledge into the diverse pool from which the community can tap from and grow from.
I feel that through the courses I have taken, I have learned how to improve our society as a whole.
I feel that what I have learned from SMSU will help me to advocate for people who are in need of help. I will have to collaborate with workers to help improve the society. I will be able to help people problem solve and advocate for them with the skills and knowledge that I have attained from SMSU.
I gained perspective and DELETED .
I had a sense of responsibility to help improve society before I came to the college. I do plan to use what I have learned to help improve the community and make life better for those who need a supporting hand.
I have a strong intention of using my degree to the best of my ability.
I have come to realize just how privileged I am compared to the rest of the world. If I am come close to feeling I deserve what I have, I have to help others who have less.
I have developed a passion and care about issues in society. I feel this passion gives me the commitment.
I have gained a deeper understanding of diversity issues, environmental issues as well as communication issues and will use the knowledge and tools that I have learned to make a difference.
I have gained many skills in many of the classes that I have taken at SMSU as it relates to dealing and resolving conflict specifically in the work place.
I have gained many skills throughout my time at SMSU. Lessons learned through professors have prepared me for the "real world" and what lies ahead of me.
I have gained many things from taking my classes for the degree.
I have gained the skills through projects and cases we do in classes.
I have good cog skills
I have intentions and a motivation to improve the lives of those less fortunate and impaired with mental illness and addiction with my degree in psychology. I have applied for a master's program at DELETED to make these goals a reality.

Participant Responses
I have learned a lot and making the world a better place is always a good idea. I've learned a lot about working with people who are different from me and it's good to have different opinions.
I have learned a tremendous amount of knowledge through my major courses that will help me with my career and help others to change society for the better.
I have learned and studied much in my time. College and my past experiences have brought me to my first career and will help lead me through my future choices.
I have learned the art of active listening. I am able to hear out others and come up with a conclusion and evaluate what they are saying. I can take in both sides of the issue and not be disrespectful.
I have learned through course material to become a leader within society and convince others to never give up in life. If someone has a problem with social structure, I will actively listen to his or her problems and give insight or solution the problem. I will become a leader as well as manager to orchestrate an effectively and efficiently organization.
I have learned through, my experiences at DELETED and SMSU, to think outside the box and to never give up on yourself. You are worth it and deserve every experience that all of us deserve. Respect and a caring smile go a long way. I have learned how to be a "Sunshine" through whatever life throws us!!!!
I have not taken all the courses I need to do the profession I want to do, so SMSU is not the only place that will help me improve society. I have learned to be more tolerant of others and have learned to look at the larger picture rather than be focused only on my own opinions.
I have shared my knowledge with others
I have the knowledge and skills, but not necessarily the responsibility to improve society
I learned a lot about communication and working with others that I agree with this.
I plan to use the degree earned at SMSU to not only benefit myself, but also to benefit the people and organization of future employment, along with the community in which I live. Life is more about the relationships with people you come in contact with rather than the money one can make through working.
I plan to work to improve the livelihoods of other DELETED .
I should use my knowledge and skills that I have learned at school to improve myself and help others along the way when needed.
I somewhat agree with this statement. I believe that the knowledge and skills I have acquired through SMSU will benefit me greatly. That being said, whether they will improve society is something would be nice to do, but ultimately I have to think of myself first.
I strongly agree because the responsibility is clearly on us to improve the society. Nowadays, people are too busy with work schedule that they overlook problems in the society. So, someone has to start looking at the problems of the society and solve it. And I would be more than happy to do it.
I strongly agree due to taking social work classes that have guided me in how I should interview individuals; handle a situation, learned about confidentiality, and other ways of approaching individuals.
I strongly agree with the above statement, that it is my responsibility and a commitment to improve society in which I live because I have an advantage and need to speak for those who cannot.
I strongly agree with this statement because as a future educator of young children it is my responsibility to teach children how to respect one another for their differences and enjoy diversity. I will be a role model for children, so in my own life I will show children how to collaborate and live peacefully together.
I strongly agree with this statement, because I'm a very social and customer-oriented person. This is what I want to do with my degree. I would like to work in a customer-based industry. I would like to assist those in need and provide as much guidance as possible to reach a satisfactory end.

Participant Responses
I strongly agree with this statement. Through my knowledge from my degree, it is my goal to focus on social change. I want to be the type of person that has a job that helps society with everything they do.
I think being of higher education than most I have an obligation to try to improve things that need to be improved
I think it's important to work with others to improve all aspects of life and society.
I think SMSU has given me great experience in interacting with people different from me- from different backgrounds, ethnicity and different countries. It has also instilled in me a sense of social justice and that I can make a difference.
I think that since I have gained this education, I should put it to good use to improve the society and try to make things better for the world.
I want to help children in bad homes.
I was fortunate enough to have received the education I did and I feel that it is important for me to not keep this to myself. I want to educate and help others and hopefully that will make those want to go on to help others as well... pay it forward.
I was never aware of community activities sponsored by SMSU to participate in.
I was very involved and helped to lead the DELETED at our campus. My faith has taught me to live and love selflessly. I want to use all my gifts and talents to glorify Jesus and love others.
I will be using the knowledge I have learned through my Education courses to help me be responsible to teach the lives of my students.
I will provide for the community and for my family.
I will use my education to improve communication within my own community and bring to their attention items that need to be addressed to make our community strong, safe and welcoming to those who visit.
I will use the skills I have to provide free tax services to those who cannot afford the service.
I work for the public school system and the teachers that work within it. Doing so, I am in constant contact with community members and legislators working to improve public education and its funding.
I work with insurance and help people have a peace of mind and protect their future
I would have to say that I cannot really give SMSU much credit on the knowledge I have gained to improve the society.
I would like to pursue actuarial science where I can benefit those by helping assess risk for companies and help people make better financial decisions.
I would say I somewhat agree because of my degree and teachers I have in that field. I feel that they were not knowledgeable in all the DELETED which in turn I feel as not set me above where I need to be to be knowledgeable in my field!!!!
If not me, then who?
If we are not bettering society than we are just making it worse.
I'm a computer science major and there's not a whole ton of things that I can do to benefit society. The one thing that I would love to be able to do, and the reason why I said 4 instead of 3 is that I hope to use my education to help bring the future to us someday.
I'm neutral about the matter
I'm neutral. I don't think my field of study really taught me much about being able to improve society through my field but rather through my own interests.
I'm not quite sure how to answer this question. I would say to help communicate better with other employees in the job that I would be working. Working together helps improve our society.

Participant Responses
It is my responsibility as a citizen to use the knowledge and skills I have to work with others to constantly improve our world. Because of the skills I have gained through educational and social experiences at SMSU I am able to do just this.
It is only when we as a people except that we are not going to live forever that we will be able to truly appreciate the short spark of our existence and live our lives fulfilled. Only when we base our knowledge on facts and evidence will we be able to connect with the true wonder of the universe and celebrate the miracle of life. And only when we realize that we are the authors of our own future will we be ready to leap out from our planetary neighborhood and explore distant worlds, and new civilizations.
Learned how to communicate correctly and effectively.
Living with a variety of people, one can see the need for generations to work together to accomplish things.
My classes have taught me about different aspects of the industry I want to get into. We have done many things off campus for other communities and groups of people and worked with many different people in the industry to help further our knowledge.
My classes taught me what they were intended to teach me for my major.
My convictions and opinions were not changed by my experiences at SMSU; I am a non-traditional student and have my outlook already in place.
My degree is in philosophy, so I have taken many different kinds of ethics classes. I know how to be fair, logical and ethical. So I am well prepared to improve society if I choose to do so.
My education at SMSU has helped open my eyes to what society consists of. Through the LAC generals I took it helped me to get opinions of my own through each respective course.
My education at SMSU has made me a much more valuable citizen; therefore, I will use this new knowledge to better my life, and the lives of others.
My education has given me the confidence to collaborate with others to solve problems and improve society in many ways. I have gained a wide variety of skills to help me in all aspects of life and society.
My education has helped me understand that it is important to act in an ethical manner at all times (while working and otherwise), which helps to improve society.
My education opened my eyes to some of the problems in society today. I also realize my education has been partially funded by the government and taxpayers/scholarship donors. I feel an obligation to not waste that money, but rather help to make the world a better place for younger generations.
My goal is to become involved in the literary process: books in particular. By working on either writing or improving their quality, I will be helping create books that people will enjoy.
My major is education, so I feel that being a teacher is a way to collaborate with others to improve society.
My major works with giving others an opportunity to make a difference
My personal goals do not necessarily have a priority of improving society.
My SMSU experiences have taught me that I should encourage people to do some good for the community by fundraising for children who are unable to gain education in their community.
My views were based on an excel mistake
No matter what people are going to disagree and it does not matter where you come from.
Part of being a business professional is being able to communicate with others and help them to understand what is going on around them.
Part of being educated means one is aware and knows how to understand information. It would make complete sense to collaborate with others to improve society. Not doing so would be a waste.
Part of being in a community is being active and pursuing ways to make it better. Marshall has helped me understand that.

Participant Responses
Participate in community events.
Since I am leaving SMSU as a graduate with a Bachelor's Degree, I plan on using what I have learned in the real world and I expect others to listen to what I have to say, especially since I have that degree and would know what I am talking about as far as helping companies grow and solve problems with the help of my input.
SMSU did not provide me with a whole lot; my previous education is what I give credit for as providing me with the ability to be involved in the community.
SMSU DELETED program has great professors that are very good at teaching the material. However, money is not invested into our program, and considering its growing population it should get more money to help pay for needed materials.
SMSU has given me a great education and the skills that are needed to be able to function well with society and understand issues involved with our society. This will help me greatly when they need to be solved.
SMSU has provided me with an abundant number of opportunities through field experiences that has left me feeling confident and prepared to go into the work force and make a difference.
SMSU has taught me how to effectively collaborate with my peers and I feel that I have gained the knowledge to be a successful person in society.
SMSU has taught me to look past my norm of living and use empathy to understand others.
Society has challenging problems but with skills acquired from SMSU, it is prudent to join others with similar goals to solve them e.g. Global warming can be reduced by helping citizens understand that we got only 1 planet and we ought to take care of it.
Some just simply don't pertain to me.
Teaching others what I have learned can always randomly show up without even knowing it at the time.
That is part of the reason for going into this line of education.
The knowledge that I have gained through my educational experience at Southwest Minnesota State University has shown me that I can help others in ways that I never thought that I could before.
The reason I went with a 5 is due to the fact that I do not think I could improve society by myself; it will take the help of other to make a change. I could come up with an idea but if I am the only one who wants to act upon it, the actions I am seeking will be difficult. However with other it might happen. In today's age if there are people and money supporting an idea or belief it will expand and work.
Theatre is an art form that often focuses on what it is to be human. Many productions I have been involved with at SMSU take a look at controversial issues and humanity. I hope to continue to create an emotion in audience members watching a performance that will make them think about the story being told.
This college did not give me a sense of responsibility and instead taught me that I owe no responsibility to anyone else. I have studied at 2 other colleges and this was horribly organized from the drop box dates to the advising times when the professor would blow off the student.
Through all of my classes here at SMSU I have been able to see many different viewpoints and beliefs. I now feel as though I am well educated in many different areas. As a future teacher, I will apply what I have learned at SMSU to help my students and peers.
Through assignments and seeing the real world for what it is, the need and benefit from volunteering are very real. The world is in a very sticky spot right now. More volunteering and commitment to a greater life for us all is the only attitude that will bring us back from the edge.
Through my education I have learned the importance we have on society and helping to better people's lives. Each and every person can make a difference and when working together a lot can be accomplished.

Participant Responses
Through my student teaching I have learned to work well with other teachers, students and faculty within a school. SMSU has given me the opportunity to learn how to work with well with others.
Through the opportunities I have taken while attending SMSU, I have learned the proper skills and gained self-confidence to improve whatever I seek needing improvement.
Through the use of management skills, I will be able to lead and serve others with a clear vision of how to engage morally. I will use what I have learned over these past two years to help my community and everyone in it that I am directly involved with.
Throughout my years at SMSU I have learned to be very responsible and committed to my studies. It is important that we learn this because our future depends on our education. To be successful in collaborating with others to improve society, our education is needed to do this successfully.
We have an obligation to ourselves and others around us to try to become the best individuals that we can be and live our lives to be productive, hardworking members of society.
Well most people decide to go to college to either better yourself or society. It would only make sense to try to make it a better world because not everyone had the chance or opportunity to go to school to learn the things that I have.
What is the use of learning something if the knowledge isn't used to help people?
While attending SMSU I worked with many different small groups and it has given me the skills I need to collaborate with others once I enter the workforce.
While I do plan on trying to help improve society, it is not solely because of my education. My involvement in a religion that does not hate, and groups that has performed volunteer work also have influenced me. My father was a generous and respected man before cancer took him, and it would be a shame if I didn't at least try to live up to his example.
With obtaining a higher education, I feel my contributions to my career and community should be taken seriously and that I will make ethical decisions when those times arise.
With the knowledge and skills I have acquired, it is my job to make sure I do not short myself and making sure it betters myself.
Yes, I agree.
You need to be able to stand up for what you think it right, even if it isn't the popular opinion. Be able to think outside of the box.

Note: Responses such as “No” or “None” are not included. Minor typos and misspellings in responses have been corrected. References to individual persons, departments, and organizations have been replaced with “**DELETED**”.

Are there any other comments you would like to make?

Participant Responses
A good head and a good heart are always a formidable combination- Nelson Mandela
A lot of these questions don't address the people who had already felt the need to do these things before attending SMSU. Yes I feel it's important to vote so did "SMSU have helped me realize that it is important for me to vote and be politically involved." No I already felt that way.
Although I agreed with the general idea of most of the comments on this survey, I don't think SMSU played any part of me having those opinions. I did not get any urge from SMSU during my time here to respond to society in any specific way. Rather, my morals and beliefs are what urge me to respond to society in certain ways.
Distance learning is learning from a distance. That being said I was probably not as involved in these types of issues as others closer to or on campus were.
Elementary and Early Childhood Education are not listed as available majors at the beginning of this survey.
I agree that I have a lot of these aspects in my life, but I do not necessarily believe that they occurred as a result of my time at SMSU. They are more strongly developed because of my morals and up-bringing.
I am so thankful to SMSU for everything they have taught me. I strive to be the best and because of my education, I can say I bettered myself.
I am surprised by the amount of questions regarding participating in volunteer opportunities regarding SMSU's involvement. During my time at SMSU none of my classes had ever promoted community involvement or directed us to where we could get involved.
I appreciate all of the professors and staff at SMSU. The professors in the DELETED department have been so wonderful and influential. I am very sad to be leaving and also excited to be moving on at the same time. I wish SMSU had a grad program for DELETED so I wouldn't have to leave my wonderful professors just yet. I have learned so much from them. Not just in education, but about life.
I came to SMSU to get an education, and I learned many skills. I did not come to be motivated to improve society, though, and I did not learn that through my education, that is from just being the person I am.
I do many of the things on this survey, but SMSU had little effect. I became who I am long before attending SMSU.
I enjoyed my time at SMSU and will miss it.
I enjoyed my time at SMSU, but there are definitely some items I would change...
I feel blessed to have the opportunity to complete a 4 year college degree.
I feel strongly about some of these things even without my experiences at SMSU. Some things are more related to my personal life or semesters I took through DELETED , or the fact that I started college as junior in high school.
I had a strong sense of self before I came back to college. The way the section 3 questions are written asked if it was because of SMSU. The answer is no, but it did build on strengths and beliefs that I already held, such as helping others when you can, a sense of community, etc. The opportunities to help were easier to access when they are right there where you are almost every day. (as a management major I am disappointed with this survey from the beginning as you didn't even bother to list it as a choice, I worked hard and spent a lot of money for this piece of paper and your lack of acknowledgement for my area of study once again makes me feel like a number and not someone who really matters)
I had to rank a lot of these lower, because I feel that I was already a responsible citizen. I am a non-traditional student, so I have had the life experience that allows me to feel this way before college.

Participant Responses
I have been enrolled at SMSU through the DELETED for the past two years. My experience with the DELETED has been great; however, the only suggestion I would have would be to incorporate more class options for online students. I am currently finishing my last semester at SMSU, and got stuck taking two classes that I do not enjoy. These classes fulfill elective requirements, and I got stuck with these classes because I had already taken all the other options or the few other options that would be available had already been filled. This would be my only suggestion to the University for the DELETED .
I have enjoyed my online experience with SMSU. I am very proud to be a SMSU Graduate.
I have loved my time here at SMSU and I look forward to pursuing graduate school in a few years here as well.
I have truly been blessed with the opportunity to attend SMSU. Whether you realize it or not, I see SMSU as a jewel here in the southwestern part of MN.
I identified strongly with many of the ideas presented; however, I do not attribute my ideas or feelings to coming from SMSU. SMSU may, to some degree, help develop these ideas or feelings, but I would not give all the credit to my education as these questions suggest. The purpose of an education is not only to educate, but also to facilitate the development of knowledge that occurs during a student's time at the university. Because I am able to dedicate my time right now to researching what I want, when I want, I have been able to grow in many ways. I would not, however, say SMSU is responsible for this growth. It was simply because I was a college student in general that I had the time to pursue my interests. Most of my research was done off my own computer in my own home, so I cannot even attribute the sources of my knowledge back to SMSU. I feel you would get a much better response on these surveys if the questions were worded differently. In addition, my major was not listed on the drop-down box. Finally, never once at SMSU did I ever have a professor ask me to somehow get involved with the community.
I just hope I actually have the opportunity to be able to make a difference.
I just want to say that I am thankful and blessed to have made it to this point in my life. I have lost a lot of friends and family members to gang related violence and I just want to overcome stereotype and become successful. My life has been a roller-coaster if I had just one way to describe it and I am just thankful to be achieving a goal that a lot of people have failed trying to reach.
I love SMSU
I love SMSU!!!
I LOVE SMSU!!!!
I loved SMSU and I am so glad that I chose this school and will always recommend it to others that are asking about colleges.
I realize my lack of community service and my lack of participation in organizations/groups at SMSU is an aspect of college I missed out on. I can honestly say that, although this may not present the best resume, I do not regret missing those experiences for the ones I gained by spending the extra "free" time with my two children. They have been my motivation and the drive which has allowed me to finish school.
I think this questionnaire is ridiculous.
I would have liked to see more emphasis put on volunteering and more range of opportunities to volunteer especially within the first two years of college. More options for service other than religious affiliated activities should be available.
I'm really going to miss SMSU after I graduate.

Participant Responses
It wasn't until my final semester at SMSU that I was really introduced to the current happenings of business news in both the US and globally. I think this needs to be addressed because I think I've learned more in that aspect in this semester than I did all the other years before attending this class (DELETED).
DELETED, DELETED, and DELETED are awesome
My major is not listed above. Communication Arts/Literature Secondary Education
My time at SMSU actually made me less confident in helping solve community problems. This is mostly because I now realize how complicated some of these problems can be. I do not believe most of the community problems are impossible but it may be too much for one person to figure out.
Offerings need to be expanded for on-line students. We are out here, but often feel like lone satellites rather than part of the SMSU culture.
Several ideals and mannerisms I held previously to attending, so my experiences at SMSU did little to increase or decrease them. In addition, though I realize that many problems in society can be solved simply, it would require obtaining high office in the federal government and illegal actions. Furthermore, my mistrust of the government has not changed and my experience from studying political science has done little to dissuade me from that view.
SMSU didn't really teach me how to work in society and make it better. The people I interacted with and the groups I am apart of did. Also my own views that I grew up with before attending SMSU had more impact on how involved with the community I am. In my opinion, the school doesn't make clubs and organizations well known. The only way I heard about the ones I am apart of was when I began taking classes for my major and minor. If you want to get students more involved start with the freshman and sophomore classes.
SMSU needs to get rid of the IDST courses. They are a joke, who needs to watch sports films and have to pay tuition to do so? Oh, I need to think critically? Who offers critical thinking courses when it is a natural instinct? I'm glad that I had to walk around the college to collect brochures from each department as a requirement for an IDST course. I not only had to take time away from DELETED job to do so, but also got to realize what a poor quality of education SMSU has to offer in certain courses that are required.
SO FRUSTRATING! Get 2 DELETED teachers: one specialized in DELETED (DELETED) and a new one that specializes in DELETED .
Some programs are not so community oriented and I felt this survey was non-stop about the community and not my personal experience at SMSU.
Thank you to all the helpful members of your staff. I really appreciate your hard work and dedication to this amazing college.
THANK YOU, TO DELETED AND SMSU, FOR ALLOWING ME TO GROW :) :)
Thanks for a great education SMSU!!!!!!
Thanks to my education I gain confidence and trust on myself I believe I can reach all my goals no matter how difficult they look.
"The wording of section III is very inaccurate. It was not the University that shaped me into who I am now. The choice of words makes this institution able to show on paper that it is ""making a difference"". However, it was not SMSU that shaped my understanding of the events that surround us. That was done on my own time spent alone, learning from the current state of hypocrisy that surrounds our everyday lives.

Participant Responses
SMSU falls into the same category as everyone else. The world of academia is far from academic, it simply institutionalizes, prohibiting absolute truth and rational thought. The bar has fallen so low that what is written here today will not be further examined nor followed up on. I can honestly say that with my Bachelor's degree in DELETED , I learned very little here at SMSU. My time here showed me how minds are not stimulated anymore. They are only taught to follow."
There is not a clear explanation of what improving society means.
There was NOT an area for me to identify Elementary and Early Childhood as my major!!!!!!!!!!!!
These questions don't really fit very well for my major in my opinion.
This is so long and drags out for no reason
This survey does not offer my major.
This survey does not really take into account that you have a large population of online students that do not participate in clubs/groups, not because they do not want to, but because it is physically not possible.
Yes, most of these questions were answered negatively based on my life experiences as a non-trad student. My experience at SMSU was to gain a degree. My life experience and how I see the world was widened due my education, but most of these questions would have been answered differently had the "SMSU" portion been removed. This school has a large population of non-trad students and it would be nice to see questionnaires and other communication directed accordingly. I am not a "20-something", so these clearance forms are indifferent to my personal needs and experience. In addition, my personal life and interactions are different from those living on or near campus...I have NEVER even been to the SMSU campus!

Note: Responses such as "No" or "None" are not included. Minor typos and misspellings in responses have been corrected. References to individual persons, departments, and organizations have been replaced with "**DELETED**".

Further Statistical Analysis

This section of the report presents the results of additional statistical analyses of the data collected in the Civic Engagement Survey. Statistical analyses included here as follows:

- Reliability for CMG scale
- Correlations between CMG subscales and selected demographic variables
- Cross-tabulations and chi-square tests for various measures of civic engagement and selected demographic variables
- Analysis of variance for CMG subscales indexed by selected demographic variables

Reliability

Scale	Cronbach's Alpha
Entire CMG Scale	.970
Knowledge Subscale	.909
Skills Subscale	.876
Dispositions Subscale	.925
Behavioral Intentions Subscale	.732

Subscale Correlations

Subscale Correlations	Behavioral Intentions	Knowledge	Skills	Dispositions	Overall CMG
No. of Hours Currently Working in a Week*	.077	.059	.032	.070	.054
Current Number of Hours Enrolled*	.014	.007	-.009	-.050	-.013
How Often Attend Religious Activities*	-.041	.014	-.024	-.017	-.035
Estimated No. of Courses with Community Involvement^	.128	.160	.177	.143	.161

*Spearman correlation computed for these variables ^Pearson correlation computed for this variable

Note: Circled values represent significant correlations at $p < .05$.

Cross-tabulations and Chi Squares

Gender Cross-tabs	Value	df	Asymp. Sig. (2-Sided)
X * Volunteering for One-Time Service Activities	4.096	4	.393
X * Volunteering for Campus Events	3.354	4	.500
X * Participation in Political Activities	10.680	4	.030
X * Community Involvement through Campus Organization or Club	1.399	4	.844
X * Participation in Community Service for Scholarship	1.348	1	.246
X * Estimated No. of Courses with Community Involvement	1.464	3	.691

X = Gender

Note: Circled values indicate significant chi-square at $p < .05$, see tables below for details.

Gender * Participation in Political Activities

		Participation in Political Activities					Total
		None/Never	Once each school year	Once or twice each semester	About once a month	Nearly every week	
Gender	Male	150	9	7	2	1	169
	Female	241	33	4	1	0	279
Total		391	42	11	3	1	448

Number of Hours Currently Working in a Week Cross-tabs	Value	df	Asymp. Sig. (2-Sided)
X * Volunteering for One-Time Service Activities	17.644	12	.121
X * Volunteering for Campus Events	40.220	12	.010
X * Participation in Political Activities	11.238	12	.154
X * Community Involvement through Campus Organization or Club	36.587	12	.009
X * Participation in Community Service for Scholarship	1.654	3	.853
X * Estimated No. of Courses with Community Involvement	25.611	9	.260

X = Number of Hours Currently Working in a Week

Note: Circled values indicate significant chi-square at $p < .05$, see table below for details.

Number of Hours Currently Working in a Week * Volunteering for Campus Events

		Volunteering for Campus Events					Total
		None/Never	Once each school year	Once or twice each semester	About once a month	Nearly every week	
Number of hours working in a week	0	91	26	10	3	1	131
	Less than 20	73	41	20	2	2	138
	20-39	77	19	13	7	1	117
	40+	54	8	4	1	0	67
Total		295	84	47	13	4	453

Number of Hours Currently Working in a Week * Community Involvement through Campus Organization or Club

		Community Involvement through Campus Organization or Club					Total
		None/Never	Once each school year	Once or twice each semester	About once a month	Nearly every week	
Number of hours working in a week	0	65	22	22	10	12	131
	Less than 20	61	16	31	12	18	138
	20-39	53	22	29	7	7	118
	40+	49	7	6	3	2	67
Total		228	67	88	32	39	454

Current Number of Hours Enrolled Cross-tabs	Value	df	Asymp. Sig. (2-Sided)
X * Volunteering for One-Time Service Activities	7.614	8	.472
X * Volunteering for Campus Events	23.683	8	.003
X * Participating in Political Activities	4.143	8	.844
X * Community Involvement through Campus Organization or Club	16.866	8	.032
X * Participation in Community Service for Scholarship	4.537	2	.103
X * Estimated No. of Courses with Community Involvement	6.534	6	.366

X = Current Number of Hours Enrolled

Note: Circled values indicate significant chi-square at $p < .05$, see table below for details.

Current Number of Hours Enrolled * Volunteering for Campus Events

		Volunteering for Campus Events					Total
		None/Never	Once each school year	Once or twice each semester	About once a month	Nearly every week	
Current number of hours enrolled	None	4	4	0	0	1	9
	Less than 12	76	15	5	3	0	99
	12+	215	75	42	10	3	345
Total		295	94	47	13	4	453

Current Number of Hours Enrolled * Community Involvement through Campus Organization or Club

		Community Involvement through Campus Organization or Club					Total
		None/Never	Once each school year	Once or twice each semester	About once a month	Nearly every week	
Current number of hours enrolled	None	4	1	3	0	1	9
	Less than 12	67	10	14	3	6	100
	12+	157	56	71	29	32	345
Total		228	67	88	32	39	454

Marital Status Cross-tabs	Value	df	Asymp. Sig. (2-Sided)
X * Volunteering for One-Time Service Activities	11.322	4	.000
X * Volunteering for Campus Events	17.155	4	.000
X * Participation in Political Activities	3.062	4	.338
X * Community Involvement through Campus Organization or Club	18.484	4	.000
X * Participation in Community Service for Scholarship	1.743	1	.082
X * Estimated Number of Courses with Community Involvement	5.450	3	.172

X = Marital Status

Note: Circled values indicate significant chi-square at $p < .05$, see tables below for details.

Marital Status * Volunteering for One-Time Service Activities

		Volunteering for One-time Service Activities					Total
		None/Never	Once each school year	Once or twice each semester	About once a month	Nearly every week	
Married or not	Married	64	12	1	2	1	80
	Not Married	204	74	72	11	8	371
Total		270	86	73	3	9	451

Marital Status * Volunteering for Campus Events

		Volunteering for Campus Events					Total
		None/Never	Once each school year	Once or twice each semester	About once a month	Nearly every week	
Married or not	Married	69	7	2	1	1	80
	Not Married	226	87	44	12	3	372
Total		295	94	46	13	4	452

Marital Status * Community Involvement through Campus Organization or Club

		Community Involvement through Campus Organization or Club					Total
		None/Never	Once each school year	Once or twice each semester	About once a month	Nearly every week	
Married or not	Married	59	7	9	3	2	80
	Not Married	168	60	79	29	37	373
Total		227	67	88	32	39	453

How Often Attend Religious Activities Cross-tabs	Value	df	Asymp. Sig. (2-Sided)
X * Volunteering for One-Time Service Activities	16.470	12	.000
X * Volunteering for Campus Events	21.661	12	.001
X * Participation in Political Activities	13.101	12	.236
X * Community Involvement through Campus Organization or Club	20.572	12	.000
X* Participation in Community Services for Scholarship	2.305	3	.106
X * Estimated Number of Courses with Community Involvement	12.357	9	.510

X = How Often Attend Religious Activities

Note: Circled values indicate significant chi-square at $p < .05$, see table below for details.

How Often Attend Religious Activities * Volunteering for One-time Service Activities

		Volunteering for One-time Service Activities					Total
		None/Never	Once each school year	Once or twice each semester	About once a month	Nearly every week	
How often attend religious activities	Do not attend	83	15	8	4	1	111
	Once or twice a year	72	25	11	2	2	112
	Once or twice a month	63	29	30	2	1	125
	Weekly or more than weekly	51	17	25	5	5	103
Total		269	86	74	13	9	451

How Often Attend Religious Activities * Volunteering for Campus Events

		Volunteering for Campus Events					Total
		None/Never	Once each school year	Once or twice each semester	About once a month	Nearly every week	
How often attend religious activities	Do not attend	82	14	6	7	2	111
	Once or twice a year	82	25	6	0	0	113
	Once or twice a month	69	33	20	2	1	125
	Weekly or more than weekly	61	22	15	4	1	103
Total		294	94	47	13	4	452

How Often Attend Religious Activities * Community Involvement through Campus organization or Club

		Community involvement through campus organization or club					Total
		None/Never	Once each school year	Once or twice each semester	About once a month	Nearly every week	
How often attend religious activities	Do not attend	63	11	23	8	7	112
	Once or twice a year	70	17	11	7	8	113
	Once or twice a month	46	30	36	6	7	125
	Weekly or more than weekly	48	9	18	11	17	103
Total		227	67	88	32	39	453

One-way ANOVAs

Gender

		ANOVA				
		Sum of Squares	df	Mean Square	F	Sig.
BEHAVIORAL INTENTIONS Subscale	Between Groups	.264	1	.264	.213	.645
	Within Groups	539.797	435	1.241		
	Total	540.061	436			
KNOWLEDGE Subscale	Between Groups	.740	1	.740	.714	.398
	Within Groups	442.020	427	1.035		
	Total	442.760	428			
SKILLS Subscale	Between Groups	.524	1	.524	.532	.466
	Within Groups	420.904	427	.986		
	Total	421.428	428			
DISPOSITIONS Subscale	Between Groups	.339	1	.339	.317	.574
	Within Groups	452.865	423	1.071		
	Total	453.205	424			
OVERALL AVERAGE	Between Groups	.495	1	.495	.509	.476
	Within Groups	380.185	391	.972		
	Total	380.680	392			

Note: None of the ANOVAs reached significance at $p < .05$.

Descriptives

		N	Mean
BEHAVIORAL INTENTIONS Subscale	Male	166	3.8514
	Female	271	3.8007
KNOWLEDGE Subscale	Male	162	3.8093
	Female	267	3.7237
SKILLS Subscale	Male	162	3.7083
	Female	267	3.6362
DISPOSITIONS Subscale	Male	162	3.8525
	Female	263	3.7943
OVERALL AVERAGE	Male	151	3.8084
	Female	242	3.7354

Number of Service Learning Courses

ANOVA

		Sum of Squares	df	Mean Square	F	Sig.
BEHAVIORAL INTENTIONS Subscale	Between Groups	13.591	3	4.530	3.750	.011
	Within Groups	518.200	429	1.208		
	Total	531.791	432			
KNOWLEDGE Subscale	Between Groups	15.115	3	5.038	5.074	.002
	Within Groups	420.054	423	.993		
	Total	435.169	426			
SKILLS Subscale	Between Groups	16.545	3	5.515	5.765	.001
	Within Groups	420.054	421	.993		
	Total	435.169	424			
DISPOSITIONS Subscale	Between Groups	14.469	3	5.515	4.663	.003
	Within Groups	431.304	417	.957		
	Total	445.773	420			
OVERALL AVERAGE	Between Groups	14.037	3	4.679	5.002	.002
	Within Groups	362.037	387	.935		
	Total	376.074	390			

Note: Circled values indicate significant ANOVA at $p < .05$, see table below for details.

Descriptives

		N	Mean
BEHAVIORAL INTENTIONS Subscale	0	202	3.6617
	1-2	158	3.9198
	3-4	38	4.2368
	5 or more	35	3.9238
KNOWLEDGE Subscale	0	197	3.5618
	1-2	159	3.8798
	3-4	38	4.0936
	5 or more	33	3.9226
SKILLS Subscale	0	199	3.4692
	1-2	156	3.7925
	3-4	36	4.0208
	5 or more	34	3.8971
DISPOSITIONS Subscale	0	196	3.6398
	1-2	154	3.9396
	3-4	38	4.2053
	5 or more	33	3.9091
OVERALL AVERAGE	0	180	3.5856
	1-2	147	3.8535
	3-4	33	4.2081
	5 or more	31	3.9054

Current Number of Hours Enrolled

ANOVA

		Sum of Squares	df	Mean Square	F	Sig.
BEHAVIORAL INTENTIONS Subscale	Between Groups	3.303	2	1.651	1.348	.261
	Within Groups	538.943	440	1.225		
	Total	542.245	442			
KNOWLEDGE Subscale	Between Groups	.309	2	.154	.150	.861
	Within Groups	445.094	432	1.030		
	Total	445.402	434			
SKILLS Subscale	Between Groups	2.531	2	1.265	1.290	.276
	Within Groups	423.906	432	.981		
	Total	426.437	434			
DISPOSITIONS Subscale	Between Groups	1.240	2	.620	.582	.559
	Within Groups	455.820	428	1.065		
	Total	457.060	430			
OVERALL AVERAGE	Between Groups	.166	2	.083	.086	.918
	Within Groups	383.961	396	.970		
	Total	384.127	398			

Note: None of the ANOVAs reached significance at $p < .05$.

Descriptives

		N	Mean
BEHAVIORAL INTENTIONS Subscale	None	9	4.2963
	Less than 12	96	3.7118
	12+	338	3.8402
KNOWLEDGE Subscale	None	443	3.8217
	Less than 12	8	3.8194
	12+	96	3.7072
SKILLS Subscale	None	331	3.7680
	Less than 12	435	3.7556
	12+	9	4.1667
DISPOSITIONS Subscale	None	94	3.6117
	Less than 12	332	3.6638
	12+	435	3.6629
OVERALL AVERAGE	None	9	4.1111
	Less than 12	95	3.8705
	12+	327	3.7930

Number of Hours Currently Working in a Week

ANOVA

		Sum of Squares	df	Mean Square	F	Sig.
BEHAVIORAL INTENTIONS Subscale	Between Groups	3.382	3	1.127	.918	.432
	Within Groups	538.863	439	1.227		
	Total	542.245	442			
KNOWLEDGE Subscale	Between Groups	1.494	3	.498	.483	.694
	Within Groups	443.909	431	1.030		
	Total	445.402	434			
SKILLS Subscale	Between Groups	.239	3	.080	.080	.971
	Within Groups	426.198	431	.989		
	Total	426.437	434			
DISPOSITIONS Subscale	Between Groups	2.002	3	.667	.626	.598
	Within Groups	455.058	427	1.066		
	Total	457.060	430			
OVERALL AVERAGE	Between Groups	.756	3	.252	.259	.855
	Within Groups	383.371	395	.971		
	Total	384.127	398			

Note: None of the ANOVAs reached significance at $p < .05$.

Descriptives

		N	Mean
BEHAVIORAL INTENTIONS Subscale	0	129	3.6899
	Less than 20	134	3.9055
	20-39	115	3.8464
	40+	65	3.8667
KNOWLEDGE Subscale	0	443	3.8217
	Less than 20	124	3.6676
	20-39	135	3.8091
	40+	111	3.7918
SKILLS Subscale	0	65	3.7504
	Less than 20	435	3.7556
	20-39	124	3.6542
	40+	135	3.6398
DISPOSITIONS Subscale	0	113	3.7002
	Less than 20	63	3.6627
	20-39	435	3.6629
	40+	122	3.7287
OVERALL AVERAGE	0	133	3.8015
	Less than 20	113	3.9071
	20-39	63	3.8571
	40+	431	3.8167

How Often Attend Religious Activities

ANOVA

		Sum of Squares	df	Mean Square	F	Sig.
BEHAVIORAL INTENTIONS Subscale	Between Groups	2.428	3	.809	.657	.579
	Within Groups	539.578	438	1.232		
	Total	542.006	441			
KNOWLEDGE Subscale	Between Groups	1.002	3	.334	.323	.809
	Within Groups	444.400	430	1.033		
	Total	445.402	433			
SKILLS Subscale	Between Groups	.183	3	.061	.062	.980
	Within Groups	426.082	430	.991		
	Total	426.266	433			
DISPOSITIONS Subscale	Between Groups	1.034	3	.345	.322	.810
	Within Groups	455.979	426	1.070		
	Total	457.013	429			
OVERALL AVERAGE	Between Groups	1.776	3	.592	.610	.609
	Within Groups	382.298	394	.970		
	Total	384.074	397			

Note: None of the ANOVAs reached significance at $p < .05$.

Descriptives

		N	Mean
BEHAVIORAL INTENTIONS Subscale	Do not attend	106	3.7893
	Once or twice a year	112	3.9435
	Once or twice a month	123	3.8076
	Weekly or more than weekly	101	3.7426
KNOWLEDGE Subscale	Do not attend	442	3.8228
	Once or twice a year	108	3.6862
	Once or twice a month	108	3.7994
	Weekly or more than weekly	120	3.7981
SKILLS Subscale	Do not attend	98	3.7313
	Once or twice a year	434	3.7555
	Once or twice a month	108	3.6887
	Weekly or more than weekly	110	3.6795
DISPOSITIONS Subscale	Do not attend	113	3.6449
	Once or twice a year	103	3.6420
	Once or twice a month	434	3.6639
	Weekly or more than weekly	106	3.7877
OVERALL AVERAGE	Do not attend	109	3.8697
	Once or twice a year	118	3.8534
	Once or twice a month	97	3.7464
	Weekly or more than weekly	430	3.8172

Marital Status

ANOVA

		Sum of Squares	df	Mean Square	F	Sig.
BEHAVIORAL INTENTIONS Subscale	Between Groups	.305	1	.305	.249	.618
	Within Groups	540.603	440	1.229		
	Total	540.908	441			
KNOWLEDGE Subscale	Between Groups	.298	1	.298	.290	.591
	Within Groups	443.916	432	1.028		
	Total	444.214	433			
SKILLS Subscale	Between Groups	.004	1	.004	.004	.949
	Within Groups	426.406	432	.987		
	Total	426.410	433			
DISPOSITIONS Subscale	Between Groups	.000	1	.000	.000	.998
	Within Groups	457.046	428	1.068		
	Total	457.046	429			
OVERALL AVERAGE	Between Groups	.011	1	.011	.011	.917
	Within Groups	383.835	396	.969		
	Total	383.845	397			

Note: None of the ANOVAs reached significance at $p < .05$.

Descriptives

		N	Mean
BEHAVIORAL INTENTIONS Subscale	Married	79	3.7679
	Not Married	363	3.8365
KNOWLEDGE Subscale	Married	442	3.8243
	Not Married	75	3.7007
SKILLS Subscale	Married	359	3.7700
	Not Married	434	3.7581
DISPOSITIONS Subscale	Married	78	3.6699
	Not Married	356	3.6619
OVERALL AVERAGE	Married	434	3.6633
	Not Married	78	3.8167

APPENDIX

Civic Engagement Survey Items

Section I

Please identify your major field(s):

Current number of credit hours enrolled

Age

Gender

- Male
- Female

Number of hours currently working in a week

Marital Status

- Married
- Single
- Divorced
- Other

Number of children in family

Race (optional)

How often do you attend church, synagogue or religious activities

- Do not attend
- Once or twice a year
- Once or twice a month
- Weekly or more than weekly

Section II

Please indicate how often you have participated in the following as part of your student experiences at SMSU: 1= None/Never 2= Once each school year 3= Once or twice each semester 4= About once a month 5= Nearly every week

Volunteering with others from SMSU for one-time service activities such as: helping out with a Habitat for Humanity project, being part of a food drive, or contributing to the Coats for Kids event

- None/Never
- Once each school year
- Once or twice each semester
- About once a month
- Nearly every week

Volunteering for campus events such as Relay for Life or the annual Chili Feed Cook-off (to support the local food shelf)

Participation in a public debate, working on a political campaign, or assisting with voter registration

Community involvement through a campus organization or club

Community involvement as part of Federal Work Study

Service through another organization not connected with SMSU

Have you ever participated in community service as part of a scholarship?

- No
- Yes

If yes, please enter number of years:

Please estimate the number of courses that you have taken at SMSU that have included community involvement such as volunteer service, community-based learning experiences, one-time service projects, or other service activities:

- 0
- 1-2
- 3-4
- 5 or more courses

Which of the following First Year Experience events have you attended at SMSU?
(Please check all that apply.)

- Convocation Speaker(s)
- Dennis Donovan lecture- Public Achievement
- George McGovern lecture- Ending Hunger in Our Time
- Paul Loeb lecture - Soul of a Citizen
- First Year Experience follow-up events (eg. Photo exhibit, lecture, fund raiser, service activity, panel discussion)
- Winona LaDuke lecture- Sustainability
- Karl Schmidt lecture- Permaculture
- Craig Howe lecture - Sustainability
- Kent Kapplinger- Art Exhibit
- Barbara Liukkonen lecture – Water Resources

Section III

Please indicate whether you agree or disagree with the following statements. 1= Strongly Disagree 6= Strongly Agree

[CMG1] My experiences at SMSU have helped me learn a lot about opportunities to become involved in the community.

- 1-Strongly Disagree
- 2
- 3
- 4
- 5
- 6-Strongly Agree

[CMG2] As a result of my experiences at SMSU, other students who know me well would describe me as a person who can discuss controversial social issues with civility and respect.

[CMG3] My experiences at SMSU have prepared me to write a letter to the newspaper or community leaders about a community issue.

[CMG4] My SMSU education has given me the professional knowledge and skills that I need to help address community issues.

[CMG5] My experiences at SMSU have helped make me a good listener, even when peoples' opinions are different from mine.

[CMG6] Based on my experiences at SMSU, I would say that most other students know less about community organizations and volunteer opportunities than I do.

[CMG7] My experiences at SMSU have helped me realize that it is important for me to vote and be politically involved.

[CMG8] My education at SMSU has increased my confidence that I can contribute to improving life in my community.

[CMG9] Because of my SMSU education, I believe that my community is enriched by having some cultural or ethnic diversity.

[CMG10] My experiences at SMSU have helped me realize that when members of my group disagree on how to solve a problem, I like to try to build consensus.

[CMG11] My education at SMSU has made me aware of a number of community issues that need to be addressed.

[CMG12] My experiences at SMSU have increased my motivation to participate in advocacy or political action groups after I graduate.

[CMG13] Through my experiences at SMSU, I am very familiar with clubs and organizations that encourage and support community involvement for college students.

[CMG14] My SMSU experiences helped me realize that I like to be involved in addressing community issues.

[CMG15] Because of the experiences at SMSU, I believe that having an impact on community problems is within my reach.

[CMG16] Because of my SMSU experiences, I plan to stay current with the local and national news after I graduate.

[CMG17] My experiences at SMSU have enabled me to plan or help implement an initiative that improves the community.

[CMG18] My experiences at SMSU have helped me realize that I prefer to work in settings in which I interact with people who are very different from me.

[CMG19] Because of the experiences I have had at SMSU, I feel a deep conviction in my career goals to achieve purposes beyond my own self-interest.

[CMG20] My experiences at SMSU have helped me develop my ability to respond to others with empathy, regardless of their backgrounds.

[CMG21] Because of my experiences at SMSU, I intend to be involved in volunteer service after I graduate.

[CMG22] My education at SMSU has motivated me to stay up to date on the current political issues in the community.

[CMG23] My SMSU education has convinced me that social problems are not too complex for me to help solve.

[CMG24] I believe that I have a responsibility to use the knowledge that I have gained at SMSU to serve others.

[CMG25] My SMSU education has prepared me to listen to others and understand their perspective on controversial issues.

[CMG26] Based on my experiences at SMSU, I would say that the main purposes of work are to improve society through my career.

[CMG27] As a result of my experiences at SMSU, I want to dedicate my career to improving society.

[CMG28] After being a student at SMSU, I feel confident that I will be able to apply what I have learned in my classes to solve real problems in society.

[CMG29] When discussing controversial social issues during my time at SMSU, I have often been able to persuade others to agree with my point of view.

[CMG30] My SMSU experiences have helped me develop a sense of who I am, which now includes a sincere desire to be of service to others.

Section IV

Please indicate whether you agree or disagree with the following statement by selecting the appropriate number. 1= Strongly Disagree 6= Strongly Agree

I have the responsibility and the commitment to use the knowledge and skills I have gained through my education to collaborate with others to improve society.

- 1-Strongly Disagree
- 2
- 3
- 4
- 5
- 6-Strongly Agree

Please describe the ways in which you agree or disagree with this statement and provide a clear explanation of your opinions.

Are there any other comments you would like to make?